

## POP1 antibody

### Product Information

Catalog No.:	FNab06640
Size:	100µg
Form:	liquid
Purification:	Immunogen affinity purified
Purity:	≥95% as determined by SDS-PAGE
Host:	Rabbit
Clonality:	polyclonal
Clone ID:	None
IsoType:	IgG
Storage:	PBS with 0.02% sodium azide and 50% glycerol pH 7.3, -20°C for 12 months(Avoid repeated freeze / thaw cycles.)

### Background

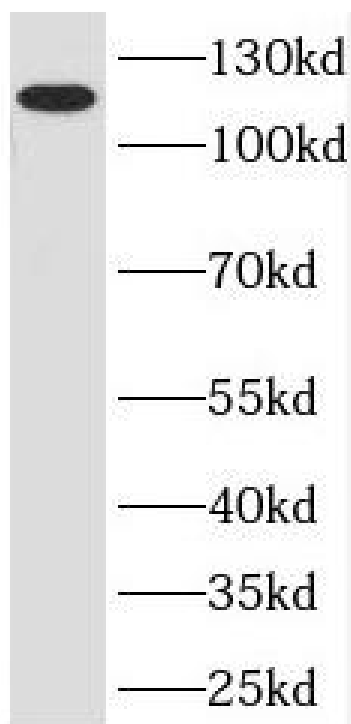
Component of ribonuclease P, a protein complex that generates mature tRNA molecules by cleaving their 5'-ends. Also a component of RNase MRP.

### Immunogen information

Immunogen:	processing of precursor 1, ribonuclease P/MRP subunit
Synonyms:	Ribonucleases P/MRP protein subunit POP1 (hPOP1) POP1 KIAA0061
Observed MW:	115 kDa
Uniprot ID :	Q99575

### Application

Reactivity:	Human, Mouse, Rat
Tested Application:	ELISA, WB, IF
Recommended dilution:	WB: 1:500-1:2000; IF: 1:20-1:200
Image:	



HeLa cells were subjected to SDS PAGE followed by western blot with FNab06640(POP1 antibody) at dilution of 1:500