

POMP antibody

Product Information

Catalog No.:	FNab06637
Size:	100µg
Form:	liquid
Purification:	Immunogen affinity purified
Purity:	≥95% as determined by SDS-PAGE
Host:	Rabbit
Clonality:	polyclonal
Clone ID:	None
IsoType:	IgG
Storage:	PBS with 0.02% sodium azide and 50% glycerol pH 7.3, -20°C for 12 months(Avoid repeated freeze / thaw cycles.)

Background

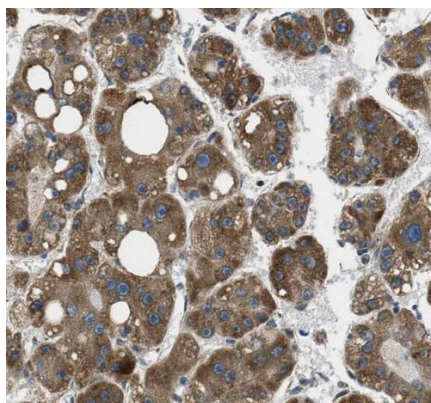
Molecular chaperone essential for the assembly of standard proteasomes and immunoproteasomes. Degraded after completion of proteasome maturation. Mediates the association of 20S preproteasome with the endoplasmic reticulum.

Immunogen information

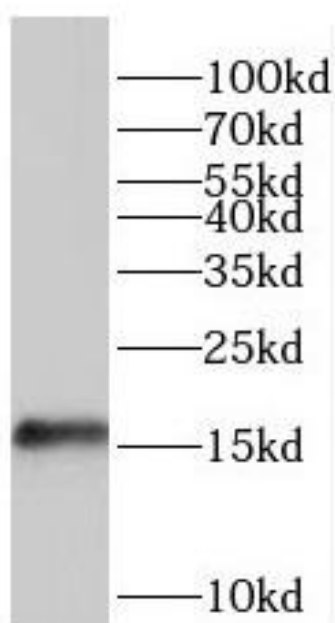
Immunogen:	proteasome maturation protein
Synonyms:	Proteasome maturation protein Proteasemblin Protein UMP1 homolog (hUMP1) Voltage-gated K channel beta subunit 4.1 POMP C13orf12 UMP1
Observed MW:	16 kDa
Uniprot ID :	Q9Y244

Application

Reactivity:	Human, Mouse, Rat
Tested Application:	ELISA, IF, IHC, WB, FC
Recommended dilution:	WB: 1:1000-1:10000; IHC: 1:20-1:200; IF: 1:10-1:100
Image:	



Immunohistochemistry of paraffin-embedded human liver tissue slide using FNab06637(POMP Antibody) at dilution of 1:50



HeLa cells were subjected to SDS PAGE followed by western blot with FNab06637(POMP Antibody) at dilution of 1:2000