

POLR3B antibody

Product Information

Catalog No.:	FNab06630
Size:	100µg
Form:	liquid
Purification:	Immunogen affinity purified
Purity:	≥95% as determined by SDS-PAGE
Host:	Rabbit
Clonality:	polyclonal
Clone ID:	None
IsoType:	IgG
Storage:	PBS with 0.02% sodium azide and 50% glycerol pH 7.3, -20°C for 12 months(Avoid repeated freeze / thaw cycles.)

Background

DNA-dependent RNA polymerase catalyzes the transcription of DNA into RNA using the four ribonucleoside triphosphates as substrates. Second largest core component of RNA polymerase III which synthesizes small RNAs, such as 5S rRNA and tRNAs. Proposed to contribute to the polymerase catalytic activity and forms the polymerase active center together with the largest subunit. Pol III is composed of mobile elements and RPC2 is part of the core element with the central large cleft and probably a clamp element that moves to open and close the cleft(By similarity). Plays a key role in sensing and limiting infection by intracellular bacteria and DNA viruses. Acts as nuclear and cytosolic DNA sensor involved in innate immune response. Can sense non-self dsDNA that serves as template for transcription into dsRNA. The non-self RNA polymerase III transcripts, such as Epstein-Barr virus-encoded RNAs(EBERs) induce type I interferon and NF-Kappa-B through the RIG-I pathway.

Immunogen information

Immunogen:	polymerase(RNA) III(DNA directed) polypeptide B
Synonyms:	DNA-directed RNA polymerase III subunit RPC2 (RNA polymerase III subunit C2) C128 DNA-directed RNA polymerase III 127.6 kDa polypeptide DNA-directed RNA polymerase III subunit B POLR3B
Observed MW:	128 kDa
Uniprot ID :	Q9NW08

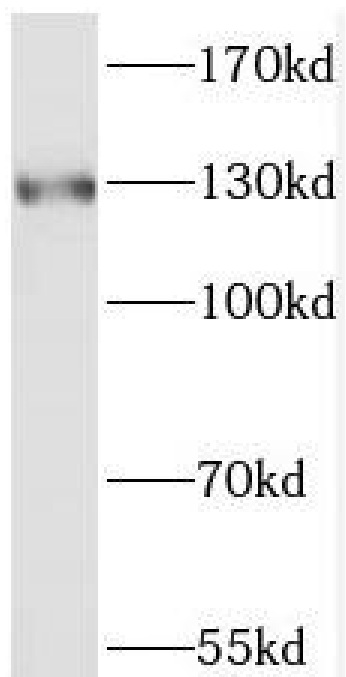
Application

Reactivity: Human, Mouse, Rat

Tested Application: ELISA, WB

Recommended dilution: WB: 1:500-1:2000

Image:



HepG2 cells were subjected to SDS PAGE followed by western blot with FNab06630(POLR3B antibody) at dilution of 1:300