

POLR3A antibody

Product Information

Catalog No.:	FNab06629
Size:	100µg
Form:	liquid
Purification:	Immunogen affinity purified
Purity:	≥95% as determined by SDS-PAGE
Host:	Rabbit
Clonality:	polyclonal
Clone ID:	None
IsoType:	IgG
Storage:	PBS with 0.02% sodium azide and 50% glycerol pH 7.3, -20°C for 12 months(Avoid repeated freeze / thaw cycles.)

Background

DNA-dependent RNA polymerase catalyzes the transcription of DNA into RNA using the four ribonucleoside triphosphates as substrates. Largest and catalytic core component of RNA polymerase III which synthesizes small RNAs, such as 5S rRNA and tRNAs. Forms the polymerase active center together with the second largest subunit. A single-stranded DNA template strand of the promoter is positioned within the central active site cleft of Pol III. A bridging helix emanates from RPC1 and crosses the cleft near the catalytic site and is thought to promote translocation of Pol III by acting as a ratchet that moves the RNA-DNA hybrid through the active site by switching from straight to bent conformations at each step of nucleotide addition(By similarity). Plays a key role in sensing and limiting infection by intracellular bacteria and DNA viruses. Acts as nuclear and cytosolic DNA sensor involved in innate immune response. Can sense non-self dsDNA that serves as template for transcription into dsRNA. The non-self RNA polymerase III transcripts, such as Epstein-Barr virus-encoded RNAs(EBERs) induce type I interferon and NF-Kappa-B through the RIG-I pathway.

Immunogen information

Immunogen:	polymerase(RNA) III(DNA directed) polypeptide A, 155kDa
Synonyms:	DNA-directed RNA polymerase III subunit RPC1 (RNA polymerase III subunit C1) DNA-directed RNA polymerase III largest subunit DNA-directed RNA polymerase III subunit A RNA polymerase III 155 kDa subunit (RPC155) RNA polymerase III subunit C160 POLR3A
Observed MW:	140-150 kDa

Uniprot ID : O14802

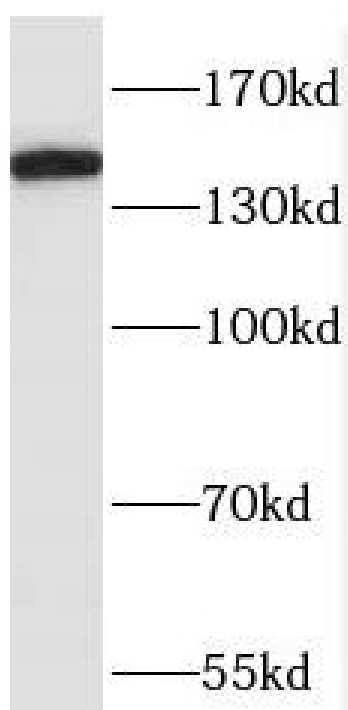
Application

Reactivity: Human, Mouse, Rat

Tested Application: ELISA, WB

Recommended dilution: WB: 1:500-1:2000

Image:



MCF7 cells were subjected to SDS PAGE followed by western blot with FNab06629(POLR3A antibody) at dilution of 1:300