

POLR2J antibody

Product Information

Catalog No.:	FNab06626
Size:	100µg
Form:	liquid
Purification:	Immunogen affinity purified
Purity:	≥95% as determined by SDS-PAGE
Host:	Rabbit
Clonality:	polyclonal
Clone ID:	None
IsoType:	IgG
Storage:	PBS with 0.02% sodium azide and 50% glycerol pH 7.3, -20°C for 12 months(Avoid repeated freeze / thaw cycles.)

Background

DNA-dependent RNA polymerase catalyzes the transcription of DNA into RNA using the four ribonucleoside triphosphates as substrates. Component of RNA polymerase II which synthesizes mRNA precursors and many functional non-coding RNAs. Pol II is the central component of the basal RNA polymerase II transcription machinery. It is composed of mobile elements that move relative to each other. RPB11 is part of the core element with the central large cleft(By similarity).

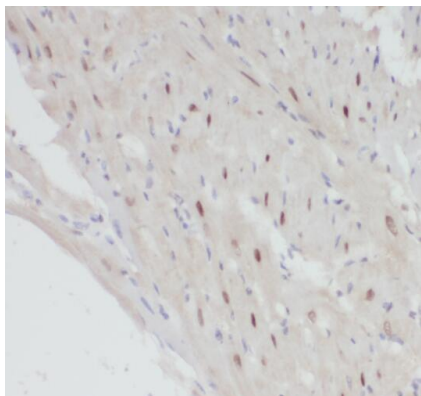
Immunogen information

Immunogen:	polymerase(RNA) II(DNA directed) polypeptide J, 13.3kDa
Synonyms:	DNA-directed RNA polymerase II subunit RPB11-a (RNA polymerase II subunit B11-a, RPB11a) DNA-directed RNA polymerase II subunit J-1 RNA polymerase II 13.3 kDa subunit POLR2J POLR2J1
Observed MW:	13 kDa
Uniprot ID :	P52435

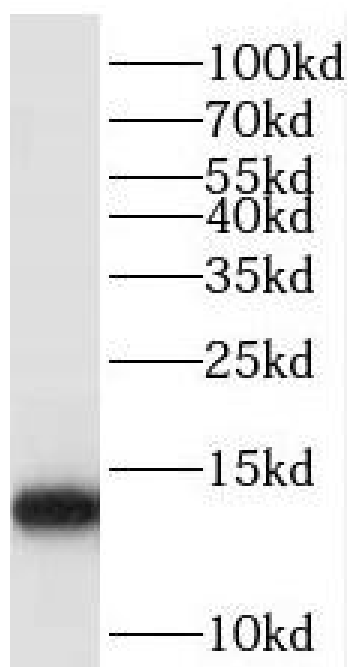
Application

Reactivity:	Human, Mouse, Rat
Tested Application:	ELISA, WB, IHC
Recommended dilution:	WB: 1:200-1:2000; IHC: 1:20-1:200; IF: 1:50-1:500

Image:



Immunohistochemistry of paraffin-embedded human heart using FNab06626(POLR2J antibody) at dilution of 1:100



A549 cells were subjected to SDS PAGE followed by western blot with FNab06626(POLR2J antibody) at dilution of 1:800