

POLR2I antibody

Product Information

| | |
|---------------|--|
| Catalog No.: | FNab06625 |
| Size: | 100µg |
| Form: | liquid |
| Purification: | Immunogen affinity purified |
| Purity: | ≥95% as determined by SDS-PAGE |
| Host: | Rabbit |
| Clonality: | polyclonal |
| Clone ID: | None |
| IsoType: | IgG |
| Storage: | PBS with 0.02% sodium azide and 50% glycerol pH 7.3, -20°C for 12 months(Avoid repeated freeze / thaw cycles.) |

Background

DNA-dependent RNA polymerase catalyzes the transcription of DNA into RNA using the four ribonucleoside triphosphates as substrates. Component of RNA polymerase II which synthesizes mRNA precursors and many functional non-coding RNAs. Pol II is the central component of the basal RNA polymerase II transcription machinery. It is composed of mobile elements that move relative to each other. RPB9 is part of the upper jaw surrounding the central large cleft and thought to grab the incoming DNA template(By similarity).

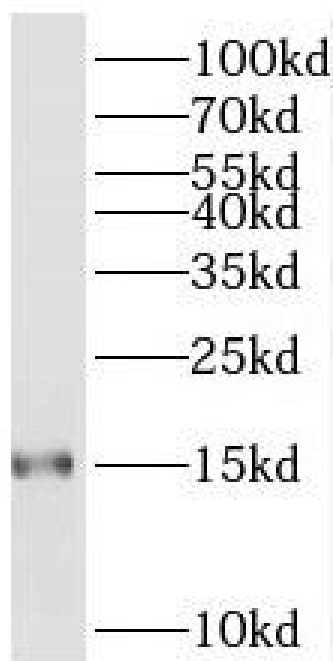
Immunogen information

| | |
|--------------|---|
| Immunogen: | polymerase(RNA) II(DNA directed) polypeptide I, 14.5kDa |
| Synonyms: | DNA-directed RNA polymerase II subunit RPB9 (RNA polymerase II subunit B9) DNA-directed RNA polymerase II subunit I RNA polymerase II 14.5 kDa subunit (RPB14.5) POLR2I |
| Observed MW: | 15 kDa |
| Uniprot ID : | P36954 |

Application

| | |
|--------------------------|-------------------|
| Reactivity: | Human, Mouse, Rat |
| Tested Application: | ELISA, WB |
| Recommended dilution:WB: | 1:500-1:2000 |

Image:



L02 cells were subjected to SDS PAGE followed by western blot with FNab06625(POLR2I antibody) at dilution of 1:500