

## POLR2C antibody

### Product Information

Catalog No.:	FNab06621
Size:	100µg
Form:	liquid
Purification:	Immunogen affinity purified
Purity:	≥95% as determined by SDS-PAGE
Host:	Rabbit
Clonality:	polyclonal
Clone ID:	None
IsoType:	IgG
Storage:	PBS with 0.02% sodium azide and 50% glycerol pH 7.3, -20°C for 12 months(Avoid repeated freeze / thaw cycles.)

### Background

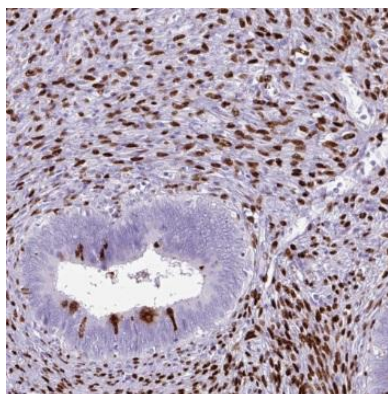
DNA-dependent RNA polymerase catalyzes the transcription of DNA into RNA using the four ribonucleoside triphosphates as substrates. Component of RNA polymerase II which synthesizes mRNA precursors and many functional non-coding RNAs. Pol II is the central component of the basal RNA polymerase II transcription machinery. It is composed of mobile elements that move relative to each other. RPB3 is part of the core element with the central large cleft and the clamp element that moves to open and close the cleft(By similarity).

### Immunogen information

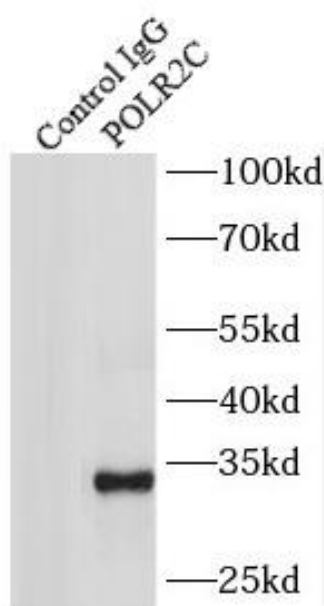
Immunogen:	polymerase(RNA) II(DNA directed) polypeptide C, 33kDa
Synonyms:	DNA-directed RNA polymerase II subunit RPB3 (RNA polymerase II subunit 3, RNA polymerase II subunit B3) DNA-directed RNA polymerase II 33 kDa polypeptide (RPB33) DNA-directed RNA polymerase II subunit C RPB31 POLR2C
Observed MW:	33 kDa
Uniprot ID :	P19387

### Application

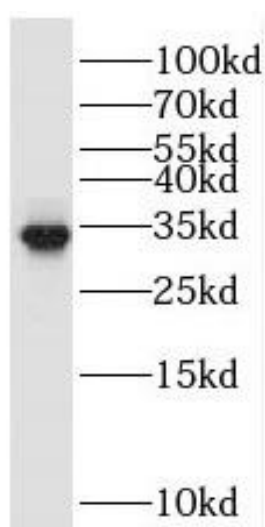
Reactivity:	Human, Mouse, Rat
Tested Application:	ELISA, WB, IHC, IP
Recommended dilution:	WB: 1:500-1:2000; IP: 1:200-1:1000; IHC: 1:20-1:200
Image:	



Immunohistochemistry of paraffin-embedded human cervical cancer using FNab06621(POLR2C antibody) at dilution of 1:100



IP Result of anti-POLR2C (IP:FNab06621, 4ug; Detection:FNab06621 1:500) with HeLa cells lysate 2000ug.



human kidney tissue were subjected to SDS PAGE followed by western blot with FNab06621(POLR2C antibody) at dilution of 1:500