

POLR2B-Specific antibody

Product Information

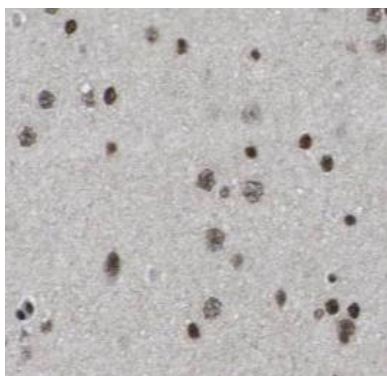
| | |
|---------------|--|
| Catalog No.: | FNab06620 |
| Size: | 100µg |
| Form: | liquid |
| Purification: | Immunogen affinity purified |
| Purity: | ≥95% as determined by SDS-PAGE |
| Host: | Rabbit |
| Clonality: | polyclonal |
| Clone ID: | None |
| IsoType: | IgG |
| Storage: | PBS with 0.02% sodium azide and 50% glycerol pH 7.3, -20°C for 12 months(Avoid repeated freeze / thaw cycles.) |

Immunogen information

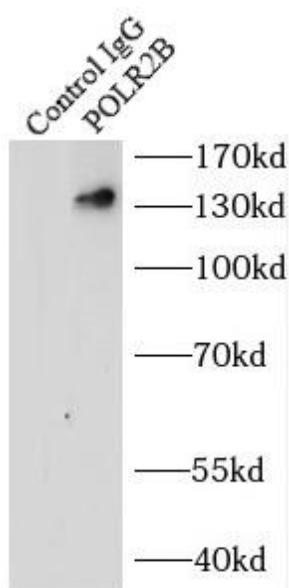
| | |
|--------------|---|
| Immunogen: | polymerase(RNA) II(DNA directed) polypeptide B, 140kDa |
| Synonyms: | DNA-directed RNA polymerase II subunit RPB2 DNA-directed RNA polymerase II 140 kDa polypeptide DNA-directed RNA polymerase II subunit B RNA polymerase II subunit 2 RNA polymerase II subunit B2 POLR2B |
| Observed MW: | 140 kDa |
| Uniprot ID : | P30876 |

Application

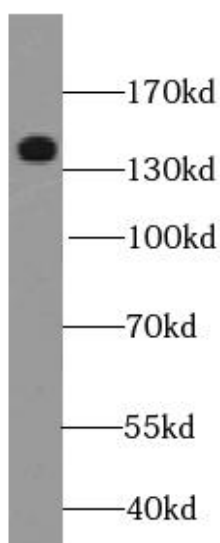
| | |
|-----------------------|---|
| Reactivity: | Human, Mouse, Rat |
| Tested Application: | ELISA, WB, IHC, IP |
| Recommended dilution: | WB: 1:500-1:5000; IP: 1:200-1:1000; IHC: 1:20-1:200 |
| Image: | |



Immunohistochemistry of paraffin-embedded human brain using FNab06620(POLR2B-Specific antibody) at dilution of 1:400



IP Result of anti-POLR2B-Specific (IP:FNab06620, 4ug; Detection:FNab06620 1:300) with HeLa cells lysate 3000ug.



A431 cells were subjected to SDS PAGE followed by western blot with FNab06620(POLR2B-Specific antibody) at dilution of 1:500