

POLR1E antibody

Product Information

Catalog No.:	FNab06619
Size:	100µg
Form:	liquid
Purification:	Immunogen affinity purified
Purity:	≥95% as determined by SDS-PAGE
Host:	Rabbit
Clonality:	polyclonal
Clone ID:	None
IsoType:	IgG
Storage:	PBS with 0.02% sodium azide and 50% glycerol pH 7.3, -20°C for 12 months(Avoid repeated freeze / thaw cycles.)

Background

DNA-dependent RNA polymerase catalyzes the transcription of DNA into RNA using the four ribonucleoside triphosphates as substrates. Component of RNA polymerase I which synthesizes ribosomal RNA precursors. Appears to be involved in the formation of the initiation complex at the promoter by mediating the interaction between Pol I and UBTF/UBF(By similarity).

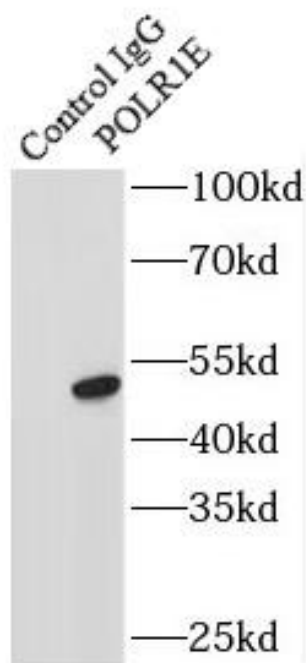
Immunogen information

Immunogen:	polymerase(RNA) I polypeptide E, 53kDa
Synonyms:	DNA-directed RNA polymerase I subunit RPA49 (RNA polymerase I subunit A49) DNA-directed RNA polymerase I subunit E RNA polymerase I-associated factor 1 RNA polymerase I-associated factor 53 POLR1E PAF53 PRAF1
Observed MW:	47-53 kDa
Uniprot ID :	Q9GZS1

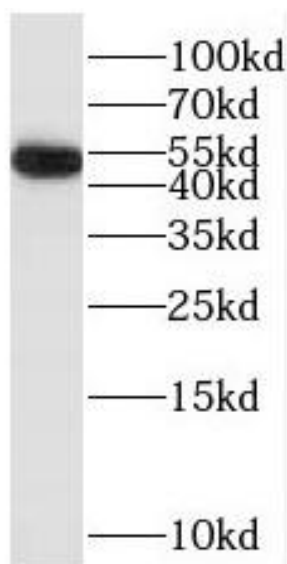
Application

Reactivity:	Human, Mouse, Rat
Tested Application:	ELISA, WB, IP
Recommended dilution:	WB: 1:500-1:2000; IP: 1:200-1:2000

Image:



IP Result of anti-POLR1E (IP:FNab06619, 3ug;
Detection:FNab06619 1:500) with Jurkat cells
lysate 1000ug.



Jurkat cells were subjected to SDS PAGE followed
by western blot with FNab06619(POLR1E
antibody) at dilution of 1:500