

POLI antibody

Product Information

Catalog No.:	FNab06612
Size:	100µg
Form:	liquid
Purification:	Immunogen affinity purified
Purity:	≥95% as determined by SDS-PAGE
Host:	Rabbit
Clonality:	polyclonal
Clone ID:	None
IsoType:	IgG
Storage:	PBS with 0.02% sodium azide and 50% glycerol pH 7.3, -20°C for 12 months(Avoid repeated freeze / thaw cycles.)

Background

Error-prone DNA polymerase specifically involved in DNA repair. Plays an important role in translesion synthesis, where the normal high-fidelity DNA polymerases cannot proceed and DNA synthesis stalls. Favors Hoogsteen base-pairing in the active site. Inserts the correct base with high-fidelity opposite an adenosine template. Exhibits low fidelity and efficiency opposite a thymidine template, where it will preferentially insert guanosine. May play a role in hypermutation of immunoglobulin genes. Forms a Schiff base with 5'-deoxyribose phosphate at abasic sites, but may not have lyase activity.

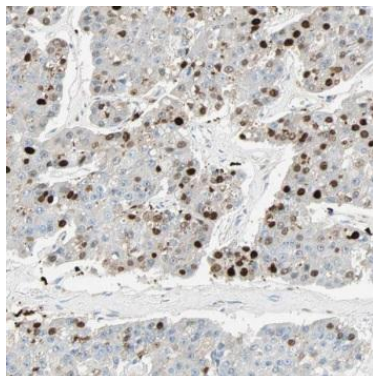
Immunogen information

Immunogen:	polymerase(DNA directed) iota
Synonyms:	DNA polymerase iota Eta2 RAD30 homolog B POLI RAD30B
Observed MW:	87 kDa
Uniprot ID :	Q9UNA4

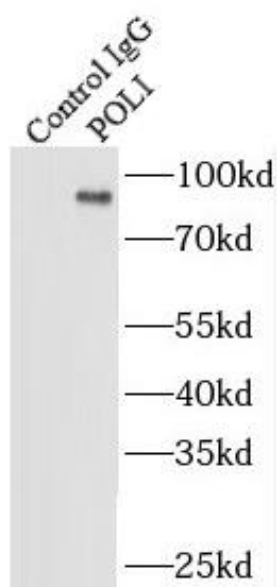
Application

Reactivity:	Human, Mouse, Rat
Tested Application:	ELISA, WB, IHC, IP
Recommended dilution:	WB: 1:500-1:2000; IP: 1:500-1:2000; IHC: 1:20-1:200

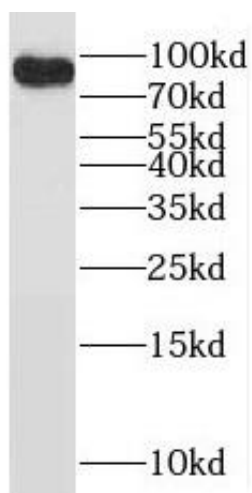
Image:



Immunohistochemistry of paraffin-embedded human pancreas cancer using FNab06612(POLI antibody) at dilution of 1:100



IP Result of anti-POLI (IP:FNab06612, 4ug; Detection:FNab06612 1:1000) with mouse testis tissue lysate 4000ug.



mouse testis tissue were subjected to SDS PAGE followed by western blot with FNab06612(POLI antibody) at dilution of 1:800