

## POLG2 antibody

### Product Information

Catalog No.:	FNab06611
Size:	100µg
Form:	liquid
Purification:	Immunogen affinity purified
Purity:	≥95% as determined by SDS-PAGE
Host:	Rabbit
Clonality:	polyclonal
Clone ID:	None
IsoType:	IgG
Storage:	PBS with 0.02% sodium azide and 50% glycerol pH 7.3, -20°C for 12 months (Avoid repeated freeze / thaw cycles.)

### Background

This gene encodes the processivity subunit of the mitochondrial DNA polymerase gamma. The encoded protein forms a heterotrimer containing one catalytic subunit and two processivity subunits. This protein enhances DNA binding and promotes processive DNA synthesis. Mutations in this gene result in autosomal dominant progressive external ophthalmoplegia with mitochondrial DNA deletions.

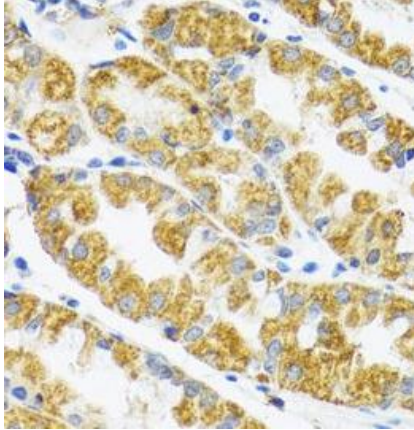
### Immunogen information

Immunogen:	polymerase (DNA directed), gamma 2, accessory subunit
Synonyms:	DNA polymerase subunit gamma-2, mitochondrial DNA polymerase gamma accessory 55 kDa subunit (p55) Mitochondrial DNA polymerase accessory subunit MtPolB PolG-beta POLG2 MTPOLB
Observed MW:	55 kDa
Uniprot ID :	Q9UHN1

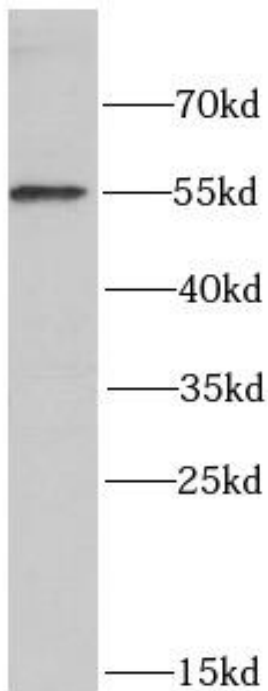
### Application

Reactivity:	Human, Mouse, Rat
Tested Application:	ELISA, IHC, WB, IF
Recommended dilution:	WB: 1:500 - 1:2000; IHC: 1:50 - 1:200; IF: 1:50 - 1:100

Image:



Immunohistochemistry of paraffin-embedded human stomach using FNab06611(POLG2 antibody) at dilution of 1:100



COLO 320 cells were subjected to SDS PAGE followed by western blot with FNab06611( POLG2 Antibody) at dilution of 1:1000