

## POLA2 antibody

### Product Information

Catalog No.:	FNab06605
Size:	100µg
Form:	liquid
Purification:	Immunogen affinity purified
Purity:	≥95% as determined by SDS-PAGE
Host:	Rabbit
Clonality:	polyclonal
Clone ID:	None
IsoType:	IgG
Storage:	PBS with 0.02% sodium azide and 50% glycerol pH 7.3, -20°C for 12 months(Avoid repeated freeze / thaw cycles.)

### Background

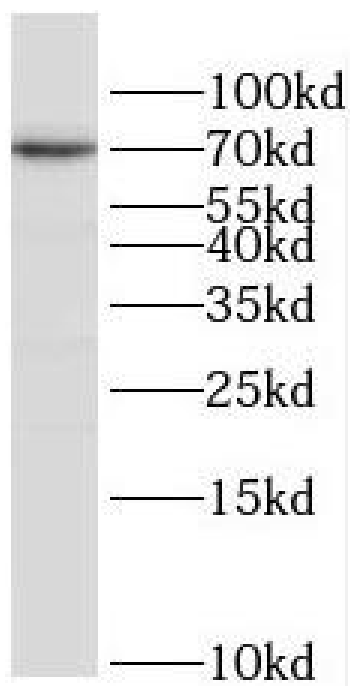
May play an essential role at the early stage of chromosomal DNA replication by coupling the polymerase alpha/primase complex to the cellular replication machinery.

### Immunogen information

Immunogen:	polymerase(DNA directed), alpha 2(70kD subunit)
Synonyms:	DNA polymerase alpha subunit B DNA polymerase alpha 70 kDa subunit POLA2
Observed MW:	68-70 kDa
Uniprot ID :	Q14181

### Application

Reactivity:	Human
Tested Application:	ELISA, WB
Recommended dilution: WB:	1:500-1:2000
Image:	



HepG2 cells were subjected to SDS PAGE followed by western blot with FNab06605(POLA2 antibody) at dilution of 1:800