

PMEPA1 antibody

Product Information

Catalog No.:	FNab06569
Size:	100µg
Form:	liquid
Purification:	Immunogen affinity purified
Purity:	≥95% as determined by SDS-PAGE
Host:	Rabbit
Clonality:	polyclonal
Clone ID:	None
IsoType:	IgG
Storage:	PBS with 0.02% sodium azide and 50% glycerol pH 7.3, -20°C for 12 months(Avoid repeated freeze / thaw cycles.)

Background

Functions as a negative regulator of TGF-beta signaling and thereby probably plays a role in cell proliferation, differentiation, apoptosis, motility, extracellular matrix production and immunosuppression. In the canonical TGF-beta pathway, ZFYVE9/SARA recruits the intracellular signal transducer and transcriptional modulators SMAD2 and SMAD3 to the TGF-beta receptor. Phosphorylated by the receptor, SMAD2 and SMAD3 then form a heteromeric complex with SMAD4 that translocates to the nucleus to regulate transcription. Through interaction with SMAD2 and SMAD3, LDLRAD4 may compete with ZFYVE9 and SMAD4 and prevent propagation of the intracellular signal(PubMed:20129061, PubMed:24627487). Also involved in down-regulation of the androgen receptor(AR), enhancing ubiquitination and proteasome-mediated degradation of AR, probably by recruiting NEDD4(PubMed:18703514).

Immunogen information

Immunogen:	prostate transmembrane protein, androgen induced 1
Synonyms:	Protein TMEPAI Prostate transmembrane protein androgen induced 1 Solid tumor-associated 1 protein Transmembrane prostate androgen-induced protein PMEPA1 STAG1 TMEPAI
Observed MW:	32 kDa
Uniprot ID :	Q969W9

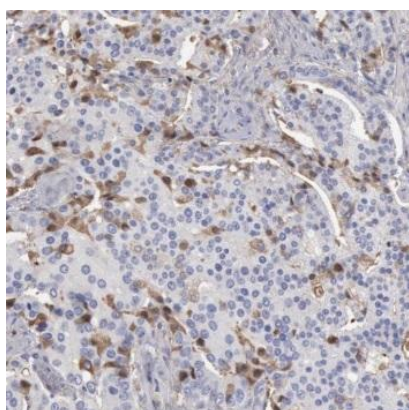
Application

Reactivity: Human, Mouse, Rat

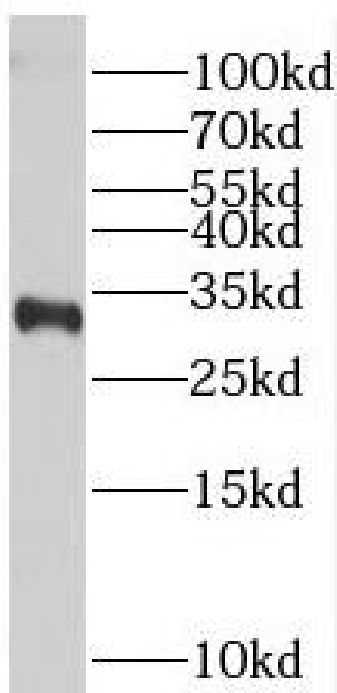
Tested Application: ELISA, WB, IHC, IF

Recommended dilution: WB: 1:500-1:2000; IHC: 1:20-1:200; IF: 1:20-1:200

Image:



Immunohistochemistry of paraffin-embedded human prostate cancer using FNab06569(PMEPA1 antibody) at dilution of 1:50



L02 cells were subjected to SDS PAGE followed by western blot with FNab06569(PMEPA1 Antibody) at dilution of 1:600