

BPIFA1 antibody

Product Information

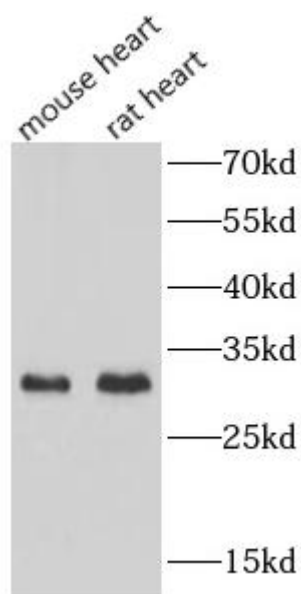
Catalog No.:	FNab06563
Size:	100µg
Form:	liquid
Purification:	Immunogen affinity purified
Purity:	≥95% as determined by SDS-PAGE
Host:	Rabbit
Clonality:	polyclonal
Clone ID:	None
IsoType:	IgG
Storage:	PBS with 0.02% sodium azide and 50% glycerol pH 7.3, -20°C for 12 months(Avoid repeated freeze / thaw cycles.)

Immunogen information

Immunogen:	palate, lung and nasal epithelium associated
Synonyms:	BPI fold-containing family A member 1 Lung-specific protein X Nasopharyngeal carcinoma-related protein Palate lung and nasal epithelium clone protein Secretory protein in upper respiratory tracts Short PLUNC1 (SPLUNC1) Tracheal epithelium-enriched protein Von Ebner protein HI BPIFA1 LUNX NASG PLUNC SPLUNC1 SPURT
Observed MW:	30 kDa
Uniprot ID :	Q9NP55

Application

Reactivity:	Human, Mouse, Rat
Tested Application:	ELISA, WB
Recommended dilution:	WB: 1:500-1:1000
Image:	



Various lysates were subjected to SDS PAGE followed by western blot with FNab06563(BPIFA1 antibody) at dilution of 1:500