

## PLSCR1 antibody

### Product Information

Catalog No.:	FNab06560
Size:	100µg
Form:	liquid
Purification:	Immunogen affinity purified
Purity:	≥95% as determined by SDS-PAGE
Host:	Rabbit
Clonality:	polyclonal
Clone ID:	None
IsoType:	IgG
Storage:	PBS with 0.02% sodium azide and 50% glycerol pH 7.3, -20°C for 12 months(Avoid repeated freeze / thaw cycles.)

### Background

May mediate accelerated ATP-independent bidirectional transbilayer migration of phospholipids upon binding calcium ions that results in a loss of phospholipid asymmetry in the plasma membrane. May play a central role in the initiation of fibrin clot formation, in the activation of mast cells and in the recognition of apoptotic and injured cells by the reticuloendothelial system.

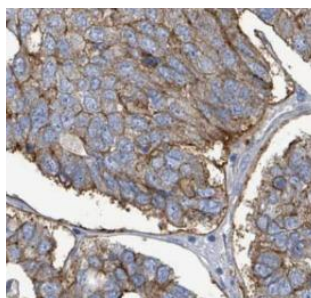
May play a role in the antiviral response of interferon(IFN) by amplifying and enhancing the IFN response through increased expression of select subset of potent antiviral genes. May contribute to cytokine-regulated cell proliferation and differentiation.

### Immunogen information

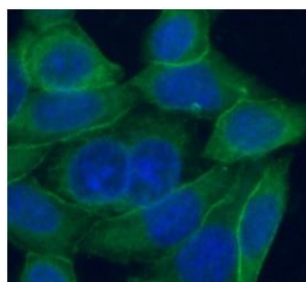
Immunogen:	phospholipid scramblase 1
Synonyms:	Phospholipid scramblase 1 (PL scramblase 1) Ca(2+)-dependent phospholipid scramblase 1 Erythrocyte phospholipid scramblase Mg(2+)-dependent nuclease MmTRA1b PLSCR1
Observed MW:	35 kDa
Uniprot ID :	O15162

### Application

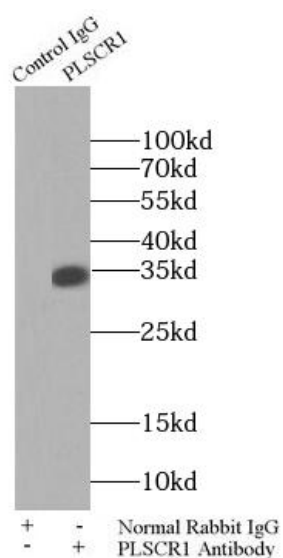
Reactivity:	Human, Mouse, Rat
Tested Application:	ELISA, WB, IHC, FC, IF, IP
Recommended dilution:	WB: 1:1000-1:4000; IP: 1:500-1:1000; IHC: 1:20-1:200; IF: 1:20-1:200
Image:	



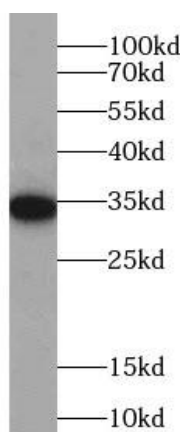
Immunohistochemistry of paraffin-embedded human pancreas cancer using FNab06560(PLSCR1 antibody) at dilution of 1:100



Immunofluorescent analysis of HeLa cells using PLSCR1 antibody(FNab06560)at dilution of 1:50



IP Result of anti-PLSCR1 (IP: FNab06560, 4ug; Detection: FNab06560 1:500) with mouse lung tissue lysate 2800ug.



human skeletal muscle tissue were subjected to SDS PAGE followed by western blot with FNab06560(PLSCR1 antibody) at dilution of 1:2000