

PLEKHB1 antibody

Product Information

| | |
|---------------|--|
| Catalog No.: | FNab06539 |
| Size: | 100µg |
| Form: | liquid |
| Purification: | Immunogen affinity purified |
| Purity: | ≥95% as determined by SDS-PAGE |
| Host: | Rabbit |
| Clonality: | polyclonal |
| Clone ID: | None |
| IsoType: | IgG |
| Storage: | PBS with 0.02% sodium azide and 50% glycerol pH 7.3, -20°C for 12 months(Avoid repeated freeze / thaw cycles.) |

Background

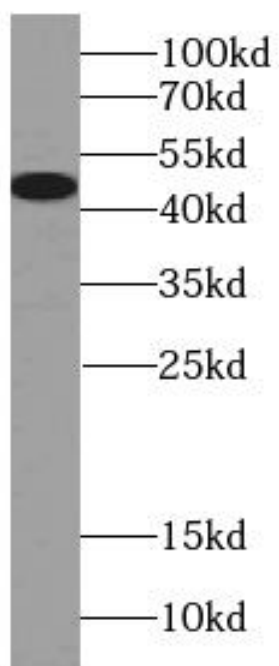
Required for proper localization of retinogeniculate projections but not for eye-specific segregation.

Immunogen information

| | |
|--------------|---|
| Immunogen: | pleckstrin homology domain containing, family B(evectins) member 1 |
| Synonyms: | Pleckstrin homology domain-containing family B member 1 (PH domain-containing family B member 1) Evectin-1 PH domain-containing protein in retina 1 (PHRET1) Pleckstrin homology domain retinal protein 1 PLEKHB1 EVT1 KPL1 PHR1 PHRET1 |
| Observed MW: | 50 kDa |
| Uniprot ID : | Q9UF11 |

Application

| | |
|-----------------------|-------------------|
| Reactivity: | Human, Mouse, Rat |
| Tested Application: | ELISA, WB |
| Recommended dilution: | WB: 1:200-1:1000 |
| Image: | |



SH-SY5Y cells were subjected to SDS PAGE followed by western blot with FNab06539(PLEKHB1 Antibody) at dilution of 1:300