

PLD1 antibody

Product Information

Catalog No.:	FNab06530
Size:	100µg
Form:	liquid
Purification:	Immunogen affinity purified
Purity:	≥95% as determined by SDS-PAGE
Host:	Rabbit
Clonality:	polyclonal
Clone ID:	None
IsoType:	IgG
Storage:	PBS with 0.02% sodium azide and 50% glycerol pH 7.3, -20°C for 12 months(Avoid repeated freeze / thaw cycles.)

Background

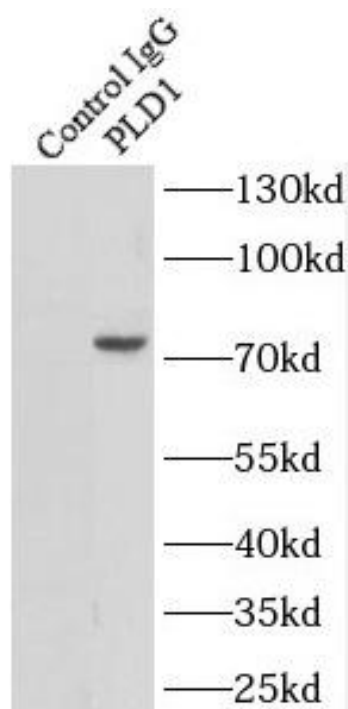
Implicated as a critical step in numerous cellular pathways, including signal transduction, membrane trafficking, and the regulation of mitosis. May be involved in the regulation of perinuclear intravesicular membrane traffic(By similarity).

Immunogen information

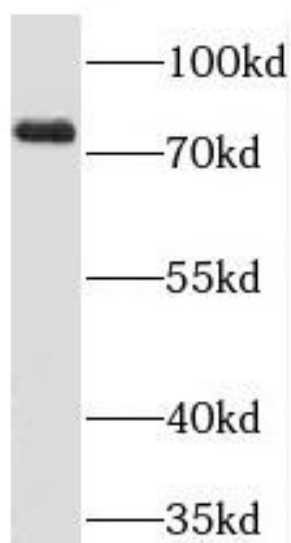
Immunogen:	phospholipase D1, phosphatidylcholine-specific
Synonyms:	Phospholipase D1 (PLD 1, hPLD1) Choline phosphatase 1 Phosphatidylcholine-hydrolyzing phospholipase D1 PLD1
Observed MW:	80 kDa
Uniprot ID :	Q13393

Application

Reactivity:	Human, Mouse, Rat
Tested Application:	ELISA, WB, IF, IP
Recommended dilution:	WB: 1:500-1:2000; IP: 1:200-1:1000; IF: 1:20-1:200
Image:	



IP Result of anti-PRKCSH (IP:FNab06530, 4ug;
Detection:FNab06530 1:1000) with HeLa cells
lysate 2000ug.



A431 cells were subjected to SDS PAGE followed
by western blot with FNab06530 (PRKCSH
antibody) at dilution of 1:4000