

## PLAG1 antibody

### Product Information

Catalog No.:	FNab06515
Size:	100µg
Form:	liquid
Purification:	Immunogen affinity purified
Purity:	≥95% as determined by SDS-PAGE
Host:	Rabbit
Clonality:	polyclonal
Clone ID:	None
IsoType:	IgG
Storage:	PBS with 0.02% sodium azide and 50% glycerol pH 7.3, -20°C for 12 months(Avoid repeated freeze / thaw cycles.)

### Background

Transcription factor whose activation results in up-regulation of target genes, such as IGFII, leading to uncontrolled cell proliferation: when overexpressed in cultured cells, higher proliferation rate and transformation are observed. Other target genes such as CRLF1, CRABP2, CRIP2, PIGF are strongly induced in cells with PLAG1 induction. Proto-oncogene whose ectopic expression can trigger the development of pleomorphic adenomas of the salivary gland and lipoblastomas. Overexpression is associated with up-regulation of IGFII, is frequently observed in hepatoblastoma, common primary liver tumor in childhood. Cooperates with CBFβ-MYH11, a fusion gene important for myeloid leukemia.

### Immunogen information

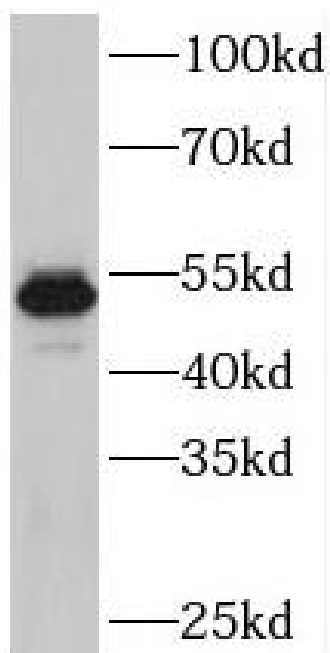
Immunogen:	pleiomorphic adenoma gene 1
Synonyms:	Zinc finger protein PLAG1 Pleiomorphic adenoma gene 1 protein PLAG1
Observed MW:	56 kDa
Uniprot ID :	Q6DJT9

### Application

Reactivity:	Human, Mouse, Rat
Tested Application:	ELISA, WB

Recommended dilution: WB: 1:500-1:2000

Image:



A431 cells were subjected to SDS PAGE followed by western blot with FNab06515( PLAG1 Antibody) at dilution of 1:300