

## CSH1 antibody

### Product Information

Catalog No.:	FNab06512
Size:	100µg
Form:	liquid
Purification:	Immunogen affinity purified
Purity:	≥95% as determined by SDS-PAGE
Host:	Rabbit
Clonality:	polyclonal
Clone ID:	None
IsoType:	IgG
Storage:	PBS with 0.02% sodium azide and 50% glycerol pH 7.3, -20°C for 12 months(Avoid repeated freeze / thaw cycles.)

### Background

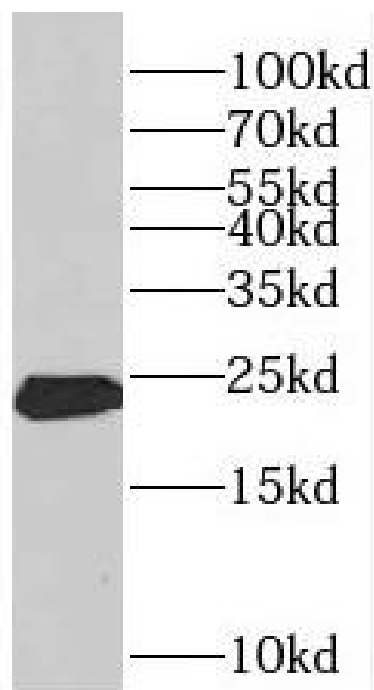
None

### Immunogen information

Immunogen:	chorionic somatomammotropin hormone 1(placental lactogen)
Synonyms:	Chorionic somatomammotropin hormone 1 (Choriomammotropin) Lactogen Placental lactogen (PL) CSH1
Observed MW:	22-25 kDa
Uniprot ID :	P0DML2

### Application

Reactivity:	Human
Tested Application:	ELISA, WB
Recommended dilution:	WB: 1:500-1:2000
Image:	



human placenta tissue were subjected to SDS PAGE followed by western blot with FNab06512(Placental lactogen antibody) at dilution of 1:500