

PLA2G4E antibody

Product Information

Catalog No.:	FNab06506
Size:	100µg
Form:	liquid
Purification:	Immunogen affinity purified
Purity:	≥95% as determined by SDS-PAGE
Host:	Rabbit
Clonality:	polyclonal
Clone ID:	None
IsoType:	IgG
Storage:	PBS with 0.02% sodium azide and 50% glycerol pH 7.3, -20°C for 12 months(Avoid repeated freeze / thaw cycles.)

Background

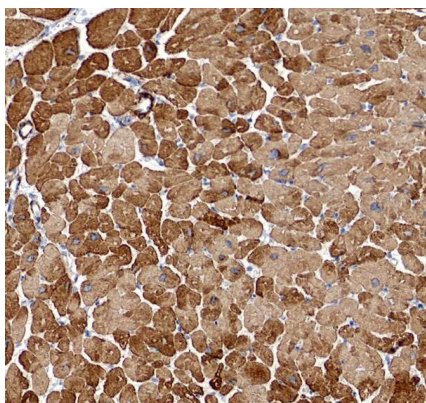
Calcium-dependent phospholipase A2 that selectively hydrolyzes glycerophospholipids in the sn-2 position.

Immunogen information

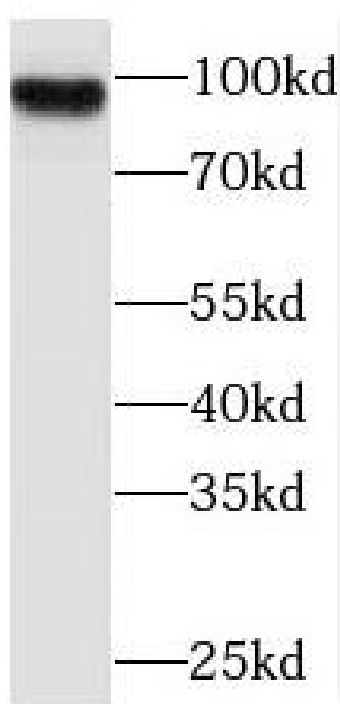
Immunogen:	phospholipase A2, group IVE
Synonyms:	Cytosolic phospholipase A2 epsilon (cPLA2-epsilon) Calcium-dependent N-acyltransferase Phospholipase A2 group IVE PLA2G4E
Observed MW:	96 kDa
Uniprot ID :	Q3MJ16

Application

Reactivity:	Human, Mouse, Rat
Tested Application:	ELISA, WB, IHC
Recommended dilution:	WB: 1:500-1:2000; IHC: 1:20-1:200
Image:	



Immunohistochemistry of paraffin-embedded human skeletal muscle using FNab06506(PLA2G4E antibody) at dilution of 1:50



SH-SY5Y cells were subjected to SDS PAGE followed by western blot with FNab06506(PLA2G4E antibody) at dilution of 1:1000