

PLA2G4B antibody

Product Information

Catalog No.:	FNab06504
Size:	100µg
Form:	liquid
Purification:	Immunogen affinity purified
Purity:	≥95% as determined by SDS-PAGE
Host:	Rabbit
Clonality:	polyclonal
Clone ID:	None
IsoType:	IgG
Storage:	PBS with 0.02% sodium azide and 50% glycerol pH 7.3, -20°C for 12 months(Avoid repeated freeze / thaw cycles.)

Background

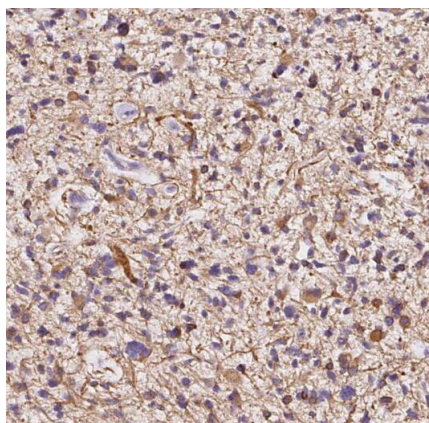
PLA2G4B, also named as cPLA2-beta, is a member of the cytosolic phospholipase A2 protein family. It is calcium-dependent phospholipase A2 that selectively hydrolyzes glycerophospholipids in the sn-2 position with a preference for arachidonoyl phospholipids. PLA2G4B has five isoforms with MW 88 kDa, 100 kDa, 55 kDa and 114 kDa.

Immunogen information

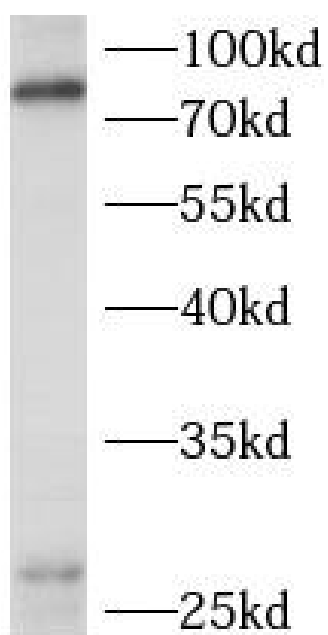
Immunogen:	phospholipase A2, group IVB(cytosolic)
Synonyms:	Cytosolic phospholipase A2 beta (cPLA2-beta) Lysophospholipase A1 group IVB Phospholipase A2 group IVB PLA2G4B
Observed MW:	88 kDa
Uniprot ID :	P0C869

Application

Reactivity:	Human
Tested Application:	ELISA, IHC, WB
Recommended dilution:	WB: 1:200-1:1000; IHC: 1:20-1:200
Image:	



Immunohistochemistry of paraffin-embedded human gliomas tissue slide using FNab06504(PLA2G4B Antibody) at dilution of 1:50



human plasma tissue were subjected to SDS PAGE followed by western blot with FNab06504(PLA2G4B Antibody) at dilution of 1:600