

PLA2G12A antibody

Product Information

| | |
|---------------|--|
| Catalog No.: | FNab06502 |
| Size: | 100µg |
| Form: | liquid |
| Purification: | Immunogen affinity purified |
| Purity: | ≥95% as determined by SDS-PAGE |
| Host: | Rabbit |
| Clonality: | polyclonal |
| Clone ID: | None |
| IsoType: | IgG |
| Storage: | PBS with 0.02% sodium azide and 50% glycerol pH 7.3, -20°C for 12 months(Avoid repeated freeze / thaw cycles.) |

Background

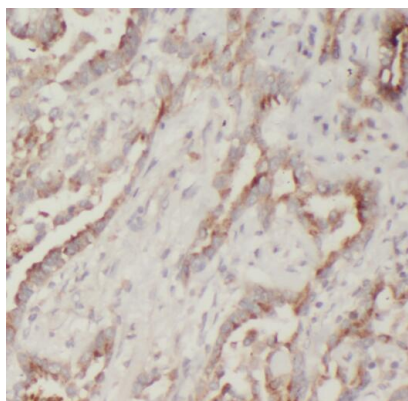
PA2 catalyzes the calcium-dependent hydrolysis of the 2-acyl groups in 3-sn-phosphoglycerides. Does not exhibit detectable activity toward sn-2-arachidonoyl-or linoleoyl-phosphatidylcholine or-phosphatidylethanolamine.

Immunogen information

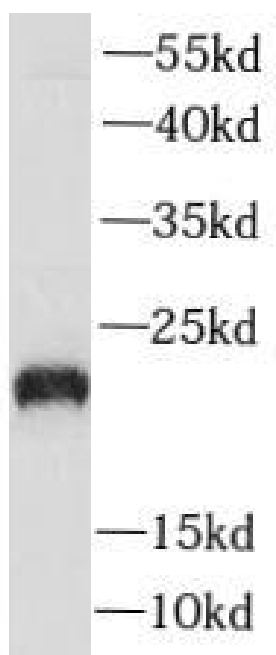
| | |
|--------------|--|
| Immunogen: | phospholipase A2, group XIIA |
| Synonyms: | Group XIIA secretory phospholipase A2 (GXII sPLA2, sPLA2-XII) Phosphatidylcholine 2-acylhydrolase 12A PLA2G12A PLA2G12 |
| Observed MW: | 21 kDa |
| Uniprot ID : | Q9BZM1 |

Application

| | |
|-----------------------|---|
| Reactivity: | Human, Mouse, Rat |
| Tested Application: | ELISA, WB, IHC, IF |
| Recommended dilution: | WB: 1:500-1:2000; IHC: 1:20-1:200; IF: 1:20-1:200 |
| Image: | |



Immunohistochemistry of paraffin-embedded human colon cancer using FNab06502(PLA2G12A antibody) at dilution of 1:50



mouse skeletal muscle tissue were subjected to SDS PAGE followed by western blot with FNab06502(PLA2G12A antibody) at dilution of 1:1000