

## PKM2-specific antibody

### Product Information

Catalog No.:	FNab06495
Size:	100µg
Form:	liquid
Purification:	Immunogen affinity purified
Purity:	≥95% as determined by SDS-PAGE
Host:	Rabbit
Clonality:	polyclonal
Clone ID:	None
IsoType:	IgG
Storage:	PBS with 0.02% sodium azide and 50% glycerol pH 7.3, -20°C for 12 months(Avoid repeated freeze / thaw cycles.)

### Background

PKM2, also named as OIP3, PK2, PK3, PKM, p58, THBP1, CTHBP and Tumor M2-PK, belongs to the pyruvate kinase family. It is glycolytic enzyme that catalyzes the transfer of a phosphoryl group from phosphoenolpyruvate (PEP) to ADP, generating ATP. It stimulates POU5F1-mediated transcriptional activation. PKM2 plays a general role in caspase independent cell death of tumor cells. The activity of the M2 isoform (but not the M1 isoform) can be inhibited by tyrosine kinase signalling in tumour cells. The primary pyruvate kinase isoform before tumour development is PK-M1; however, the primary isoform from four independent tumours is PK-M2.(PMID:18337823) PKM2, Pyruvate kinase isozymes M1/M2, has 2 isoforms. The immunogen of this antibody is M2 isoform, also called PKM2. This antibody is specific to PKM2 isoform.

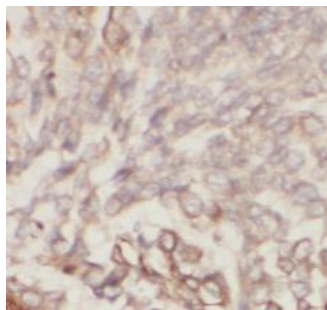
### Immunogen information

Immunogen:	PKM2 pyruvate kinase, muscle
Synonyms:	Pyruvate kinase PKM Cytosolic thyroid hormone-binding protein (CTHBP) Opa-interacting protein 3 (OIP-3) Pyruvate kinase 2/3 Pyruvate kinase muscle isozyme Threonine-protein kinase PKM2 Thyroid hormone-binding protein 1 (THBP1) Tumor M2-PK Tyrosine-protein kinase PKM2 p58 PKM OIP3 PK2 PK3 PKM2
Observed MW:	58 kDa
Uniprot ID :	P14618

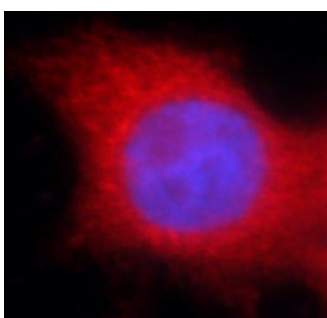
### Application

Reactivity:	Human, Mouse
Tested Application:	ELISA, WB, IHC, IF, IP
Recommended dilution:	WB: 1:1000-1:4000; IP: 1:200-1:1000; IHC: 1:100-1:400; IF: 1:10-1:100

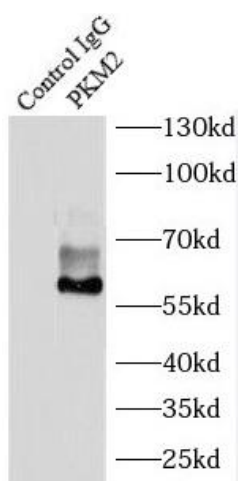
Image:



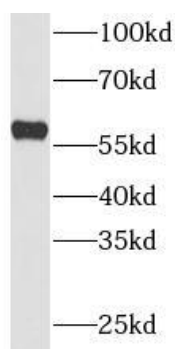
Immunohistochemistry of paraffin-embedded human lung cancer tissue slide using FNab06495(PKM2-specific Antibody) at dilution of 1:200



Immunofluorescent analysis of MCF-7 cells, using FNab06495(PKM2-specific Antibody) at 1:25 dilution and Rhodamine-labeled goat anti-rabbit IgG (red)



IP Result of anti-PKM2-specific (IP:FNab06495, 4ug; Detection:FNab06495 1:300) with MCF-7 cells lysate 3250ug.



MCF7 cells were subjected to SDS PAGE followed by western blot with FNab06495(PKM2-specific antibody) at dilution of 1:1500