

PKD2L1 antibody

Product Information

Catalog No.:	FNab06488
Size:	100µg
Form:	liquid
Purification:	Immunogen affinity purified
Purity:	≥95% as determined by SDS-PAGE
Host:	Rabbit
Clonality:	polyclonal
Clone ID:	None
IsoType:	IgG
Storage:	PBS with 0.02% sodium azide and 50% glycerol pH 7.3, -20°C for 12 months(Avoid repeated freeze / thaw cycles.)

Background

Pore-forming subunit of a ciliary calcium channel that controls calcium concentration within primary cilia without affecting cytoplasmic calcium concentration. Forms a heterodimer with PKD1L1 in primary cilia and forms a calcium-permeant ciliary channel that regulates sonic hedgehog/SHH signaling and GLI2 transcription. May act as a sour taste receptor by forming a calcium channel with PKD1L3 in gustatory cells; however, its contribution to sour taste perception is unclear in vivo and may be indirect.

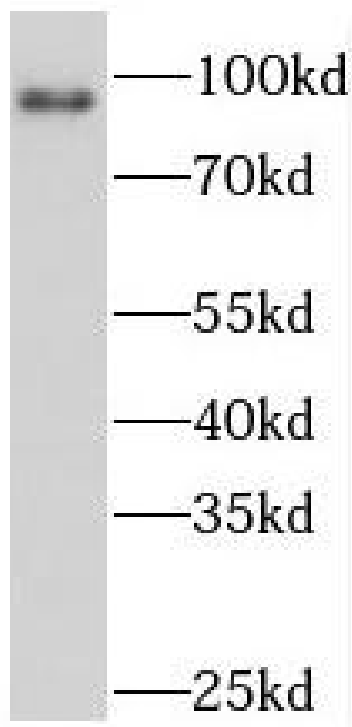
Immunogen information

Immunogen:	polycystic kidney disease 2-like 1
Synonyms:	Polycystin-2-like protein 1 (Polycystin-2L1) Polycystic kidney disease 2-like 1 protein Polycystin-2 homolog Polycystin-L Polycystin-L1 PKD2L1 PKD2L PKDL TRPP3
Observed MW:	92 kDa
Uniprot ID :	Q9P0L9

Application

Reactivity:	Human, Mouse, Rat
Tested Application:	ELISA, WB
Recommended dilution: WB:	1:500-1:2000

Image:



human liver tissue were subjected to SDS PAGE followed by western blot with FNab06488(PKD2L1 antibody) at dilution of 1:500