

PRKCB antibody

Product Information

Catalog No.:	FNab06481
Size:	100µg
Form:	liquid
Purification:	Immunogen affinity purified
Purity:	≥95% as determined by SDS-PAGE
Host:	Rabbit
Clonality:	polyclonal
Clone ID:	None
IsoType:	IgG
Storage:	PBS with 0.02% sodium azide and 50% glycerol pH 7.3, -20°C for 12 months (Avoid repeated freeze / thaw cycles.)

Background

Protein kinase C (PKC) is a family of serine- and threonine-specific protein kinases that can be activated by calcium and second messenger diacylglycerol. PKC family members phosphorylate a wide variety of protein targets and are known to be involved in diverse cellular signaling pathways. PKC family members also serve as major receptors for phorbol esters, a class of tumor promoters. Each member of the PKC family has a specific expression profile and is believed to play a distinct role in cells. The protein encoded by this gene is one of the PKC family members. This protein kinase has been reported to be involved in many different cellular functions, such as B cell activation, apoptosis induction, endothelial cell proliferation, and intestinal sugar absorption. Studies in mice also suggest that this kinase may also regulate neuronal functions and correlate fear-induced conflict behavior after stress. Alternatively spliced transcript variants encoding distinct isoforms have been reported.

Immunogen information

Immunogen:	protein kinase C, beta
Synonyms:	Protein kinase C beta type (PKC-B, PKC-beta) PRKCB PKCB PRKCB1
Observed MW:	80 kDa
Uniprot ID :	P05771

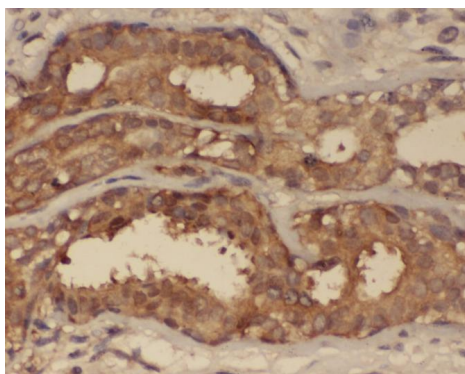
Application

Reactivity:	Human, Mouse, Rat
-------------	-------------------

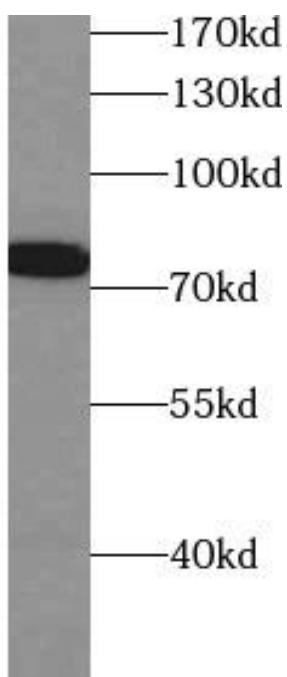
Tested Application: ELISA, WB, IHC

Recommended dilution: WB: 1:500 - 1:2000; IHC: 1:50 - 1:200

Image:



Immunohistochemistry of paraffin-embedded human pancreas cancer using FNab06481(PRKCB antibody) at dilution of 1:50



mouse brain tissue were subjected to SDS PAGE followed by western blot with FNab06481(PRKCB antibody) at dilution of 1:1000