

## PITX1 antibody

### Product Information

Catalog No.:	FNab06473
Size:	100µg
Form:	liquid
Purification:	Immunogen affinity purified
Purity:	≥95% as determined by SDS-PAGE
Host:	Rabbit
Clonality:	polyclonal
Clone ID:	None
IsoType:	IgG
Storage:	PBS with 0.02% sodium azide and 50% glycerol pH 7.3, -20°C for 12 months(Avoid repeated freeze / thaw cycles.)

### Background

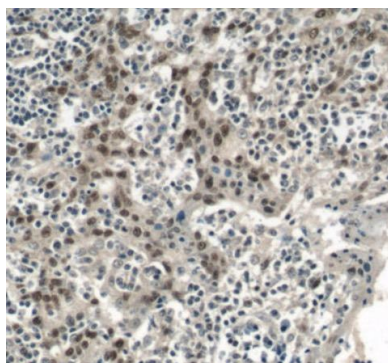
May play a role in the development of anterior structures, and in particular, the brain and facies and in specifying the identity or structure of hindlimb.

### Immunogen information

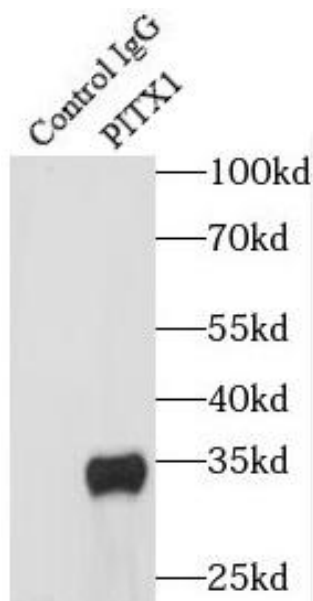
Immunogen:	paired-like homeodomain 1
Synonyms:	Pituitary homeobox 1 Hindlimb-expressed homeobox protein backfoot Homeobox protein PITX1 Paired-like homeodomain transcription factor 1 PITX1 BFT PTX1
Observed MW:	38-40 kDa
Uniprot ID :	P78337

### Application

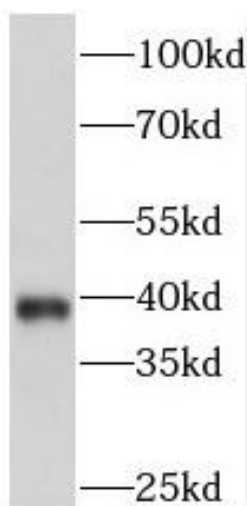
Reactivity:	Human, Mouse
Tested Application:	ELISA, WB, IHC, IF, IP
Recommended dilution:	WB: 1:500-1:2000; IP: 1:200-1:1000; IHC: 1:20-1:200; IF: 1:20-1:200
Image:	



Immunohistochemistry of paraffin-embedded human tonsillitis using FNab06473(PITX1 antibody) at dilution of 1:50



IP Result of anti-PITX1 (IP:FNab06473, 4ug; Detection:FNab06473 1:1000) with HeLa cells lysate 1200ug.



HeLa cells were subjected to SDS PAGE followed by western blot with FNab06473(PITX1 antibody) at dilution of 1:800