

## PIEZO1 antibody

### Product Information

Catalog No.:	FNab06435
Size:	100µg
Form:	liquid
Purification:	Immunogen affinity purified
Purity:	≥95% as determined by SDS-PAGE
Host:	Rabbit
Clonality:	polyclonal
Clone ID:	None
IsoType:	IgG
Storage:	PBS with 0.02% sodium azide and 50% glycerol pH 7.3, -20°C for 12 months(Avoid repeated freeze / thaw cycles.)

### Background

Pore-forming subunit of a mechanosensitive non-specific cation channel(PubMed:23479567, PubMed:23695678). Generates currents characterized by a linear current-voltage relationship that are sensitive to ruthenium red and gadolinium. Plays a key role in epithelial cell adhesion by maintaining integrin activation through R-Ras recruitment to the ER, most probably in its activated state, and subsequent stimulation of calpain signaling(PubMed:20016066). In the kidney, may contribute to the detection of intraluminal pressure changes and to urine flow sensing. Acts as shear-stress sensor that promotes endothelial cell organization and alignment in the direction of blood flow through calpain activation(PubMed:25119035). Plays a key role in blood vessel formation and vascular structure in both development and adult physiology(By similarity).

### Immunogen information

Immunogen:	family with sequence similarity 38, member A
Synonyms:	Piezo-type mechanosensitive ion channel component 1 Membrane protein induced by beta-amyloid treatment (Mib) Protein FAM38A PIEZO1 FAM38A KIAA0233
Observed MW:	250 kDa
Uniprot ID :	Q92508

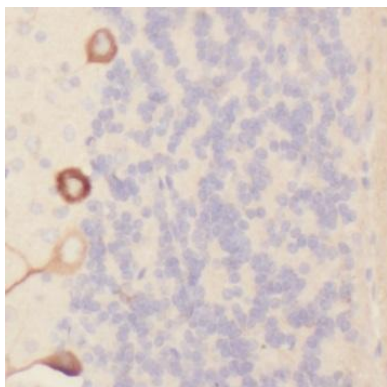
### Application

Reactivity: Human, Mouse

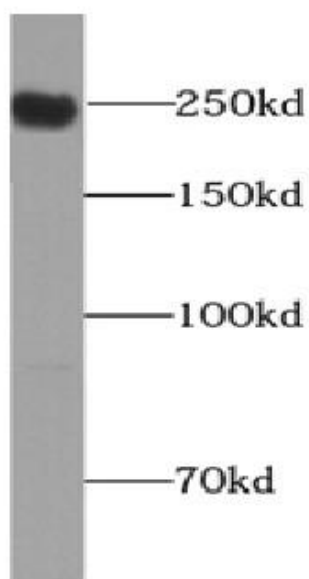
Tested Application: ELISA, WB, IHC

Recommended dilution: WB: 1:200-1:1000; IHC: 1:50-1:500

Image:



Immunohistochemistry of paraffin-embedded human brain tissue slide using FNab06435(FAM38A Antibody) at dilution of 1:200



HepG2 cells were subjected to SDS PAGE followed by western blot with FNab06435(Piezo1 antibody) at dilution of 1:500