

## PICK1 antibody

### Product Information

|               |  |
|---------------|--|
| Catalog No.:  | FNab06434  |
| Size:         | 100µg  |
| Form:         | liquid   |
| Purification: | Immunogen affinity purified  |
| Purity:       | ≥95% as determined by SDS-PAGE   |
| Host:         | Rabbit   |
| Clonality:    | polyclonal   |
| Clone ID:     | None   |
| IsoType:      | IgG  |
| Storage:      | PBS with 0.02% sodium azide and 50% glycerol pH 7.3, -20°C for 12 months(Avoid repeated freeze / thaw cycles.) |

### Background

Probable adapter protein that bind to and organize the subcellular localization of a variety of membrane proteins containing some PDZ recognition sequence. Involved in the clustering of various receptors, possibly by acting at the receptor internalization level. Plays a role in synaptic plasticity by regulating the trafficking and internalization of AMPA receptors. May be regulated upon PRKCA activation. May regulate ASIC1/ASIC3 channel. Regulates actin polymerization by inhibiting the actin-nucleating activity of the Arp2/3 complex; the function is competitive with nucleation promoting factors and is linked to neuronal morphology regulation and AMPA receptor(AMPA) endocytosis. Via interaction with the Arp2/3 complex involved in regulation of synaptic plasticity of excitatory synapses and required for spine shrinkage during long-term depression(LTD). Involved in regulation of astrocyte morphology, antagonistic to Arp2/3 complex activator WASL/N-WASP function.

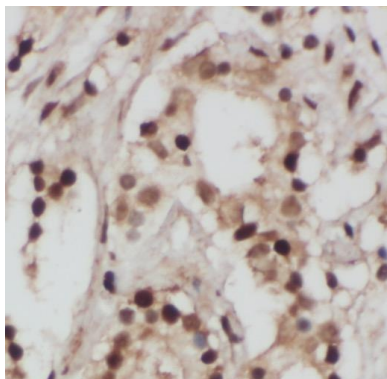
### Immunogen information

|              |  |
|--------------|--|
| Immunogen:   | protein interacting with PRKCA 1   |
| Synonyms:    | PRKCA-binding protein Protein interacting with C kinase 1 Protein kinase C-alpha-binding protein PICK1 PRKCABP |
| Observed MW: | 50-55 kDa  |
| Uniprot ID : | Q9NRD5   |

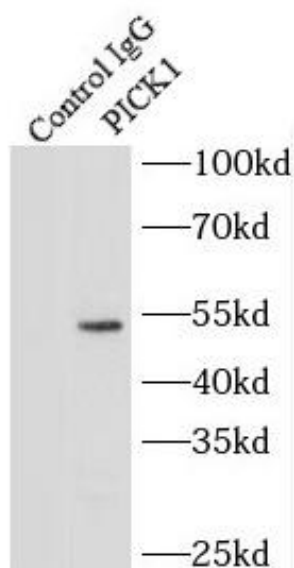
### Application

|                       |   |
|-----------------------|---|
| Reactivity:           | Human, Mouse, Rat   |
| Tested Application:   | ELISA, IHC, WB, IP, IF  |
| Recommended dilution: | WB: 1:500-1:2000; IP: 1:200-1:1000; IHC: 1:20-1:200; IF: 1:20-1:200 |

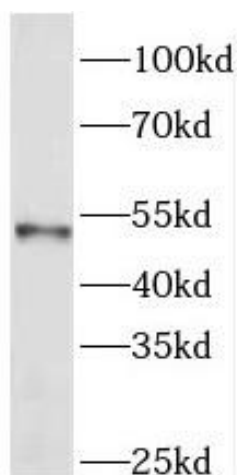
Image:



Immunohistochemistry of paraffin-embedded human prostate cancer using FNab06434(PICK1 antibody) at dilution of 1:50



IP Result of anti-PICK1 (IP:FNab06434, 4ug; Detection:FNab06434 1:500) with mouse brain tissue lysate 4400ug.



mouse brain tissue were subjected to SDS PAGE followed by western blot with FNab06434(PICK1 antibody) at dilution of 1:500