

phospho-RCC1(Ser12) antibody

Product Information

Catalog No.:	FNab06406
Size:	100µg
Form:	liquid
Purification:	Immunogen affinity purified
Purity:	≥95% as determined by SDS-PAGE
Host:	Rabbit
Clonality:	polyclonal
Clone ID:	None
IsoType:	IgG
Storage:	PBS with 0.02% sodium azide and 50% glycerol pH 7.3, -20°C for 12 months(Avoid repeated freeze / thaw cycles.)

Background

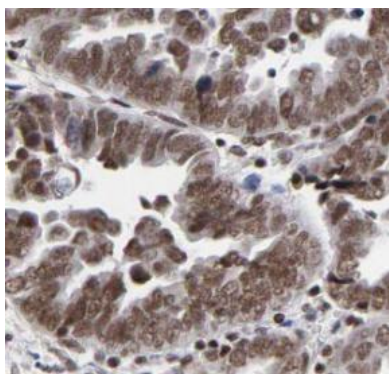
None

Immunogen information

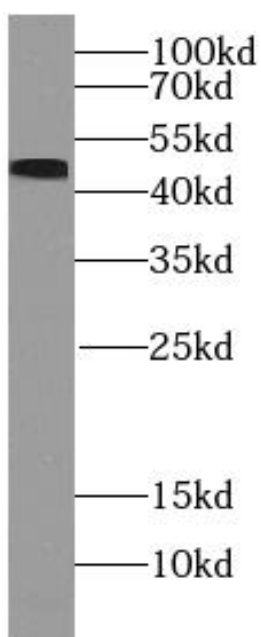
Immunogen:	regulator of chromosome condensation 1
Synonyms:	Regulator of chromosome condensation Cell cycle regulatory protein Chromosome condensation protein 1 RCC1 CHC1
Observed MW:	48 kDa
Uniprot ID :	P18754

Application

Reactivity:	Human, Mouse, Rat
Tested Application:	ELISA, WB, IHC
Recommended dilution:	WB: 1:500-1:1000; IHC: 1:20-1:200
Image:	



Immunohistochemistry of paraffin-embedded human ovary tumor using FNab06406(phospho-CHC1(Ser12) antibody) at dilution of 1:50



HeLa cells were subjected to SDS PAGE followed by western blot with FNab06406(phospho-CHC1(Ser12) antibody) at dilution of 1:300