

PHLPP1 antibody

Product Information

Catalog No.:	FNab06398
Size:	100µg
Form:	liquid
Purification:	Immunogen affinity purified
Purity:	≥95% as determined by SDS-PAGE
Host:	Rabbit
Clonality:	polyclonal
Clone ID:	None
IsoType:	IgG
Storage:	PBS with 0.02% sodium azide and 50% glycerol pH 7.3, -20°C for 12 months(Avoid repeated freeze / thaw cycles.)

Background

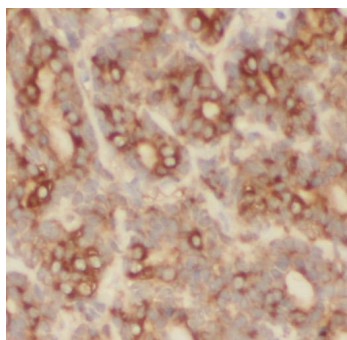
None

Immunogen information

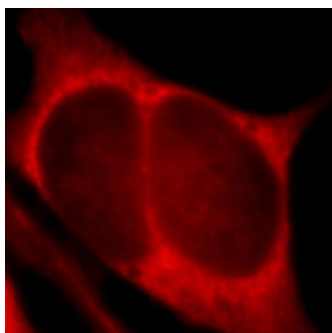
Immunogen:	PH domain and leucine rich repeat protein phosphatase
Synonyms:	PH domain leucine-rich repeat-containing protein phosphatase 1 Pleckstrin homology domain-containing family E member 1 (PH domain-containing family E member 1) Suprachiasmatic nucleus circadian oscillatory protein (hSCOP) PHLPP1 KIAA0606 PHLPP PLEKHE1 SCOP
Observed MW:	185 kDa
Uniprot ID :	O60346

Application

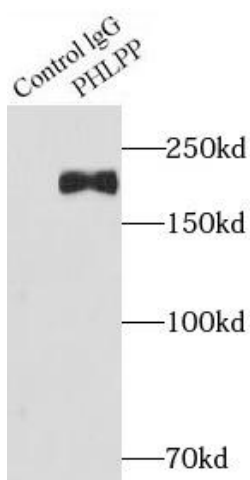
Reactivity:	Human, Mouse
Tested Application:	ELISA, WB, IF, IHC, IP
Recommended dilution:	WB: 1:500-1:2000; IP: 1:500-1:2000; IHC: 1:20-1:200; IF: 1:20-1:200
Image:	



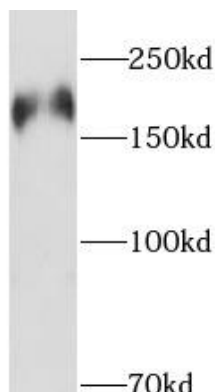
Immunohistochemistry of paraffin-embedded human liver slide using FNab06398(PhLPP Antibody) at dilution of 1:50



Immunofluorescent analysis of HepG2 cells, using PhLPP antibody FNab06398 at 1:50 dilution and Rhodamine-labeled goat anti-rabbit IgG (red).



IP Result of anti-PhLPP (IP: FNab06398, 4ug; Detection: FNab06398 1:1000) with mouse brain tissue lysate 5000ug.



mouse brain tissue were subjected to SDS PAGE followed by western blot with FNab06398(PhLPP antibody) at dilution of 1:1000