

## PRPH antibody

### Product Information

Catalog No.:	FNab06316
Size:	100µg
Form:	liquid
Purification:	Immunogen affinity purified
Purity:	≥95% as determined by SDS-PAGE
Host:	Rabbit
Clonality:	polyclonal
Clone ID:	None
IsoType:	IgG
Storage:	PBS with 0.02% sodium azide and 50% glycerol pH 7.3, -20°C for 12 months (Avoid repeated freeze / thaw cycles.)

### Background

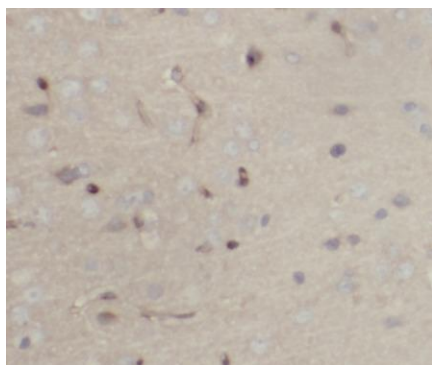
This gene encodes a cytoskeletal protein found in neurons of the peripheral nervous system. The encoded protein is a type III intermediate filament protein with homology to other cytoskeletal proteins such as desmin, and is a different protein that the peripherin found in photoreceptors. Mutations in this gene have been associated with susceptibility to amyotrophic lateral sclerosis.

### Immunogen information

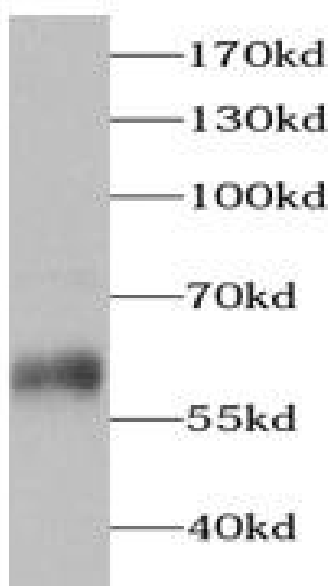
Immunogen:	peripherin
Synonyms:	Peripherin Neurofilament 4 PRPH NEF4 PRPH1
Observed MW:	62 kDa
Uniprot ID :	P41219

### Application

Reactivity:	Human, Mouse, Rat
Tested Application:	ELISA, WB, IHC
Recommended dilution:	WB: 1:500 - 1:2000; IHC: 1:50 - 1:200
Image:	



Immunohistochemistry of paraffin-embedded human brain tissue slide using FNab06316( Peripherin Antibody) at dilution of 1:100



COLO 320 cells were subjected to SDS PAGE followed by western blot with FNab06316(PRPH antibody) at dilution of 1:1000