

PDHA1 antibody

Product Information

Catalog No.:	FNab06269
Size:	100µg
Form:	liquid
Purification:	Protein A+G purification
Purity:	≥95% as determined by SDS-PAGE
Host:	Mouse
Clonality:	monoclonal
Clone ID:	8C5
IsoType:	IgG1
Storage:	PBS with 0.02% sodium azide and 50% glycerol pH 7.3, -20°C for 12 months(Avoid repeated freeze / thaw cycles.)

Background

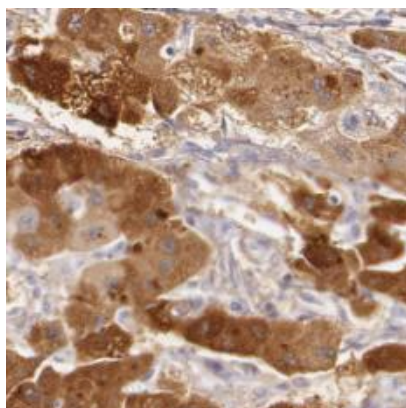
The pyruvate dehydrogenase complex catalyzes the overall conversion of pyruvate to acetyl-CoA and CO(2), and thereby links the glycolytic pathway to the tricarboxylic cycle.

Immunogen information

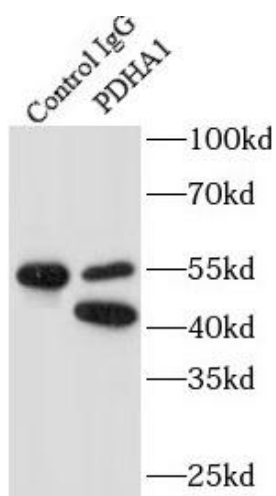
Immunogen:	pyruvate dehydrogenase(lipoamide) alpha 1
Synonyms:	Pyruvate dehydrogenase E1 component subunit alpha, somatic form, mitochondrial PDHE1-A type I PDHA1 PHE1A
Observed MW:	43 kDa
Uniprot ID :	P08559

Application

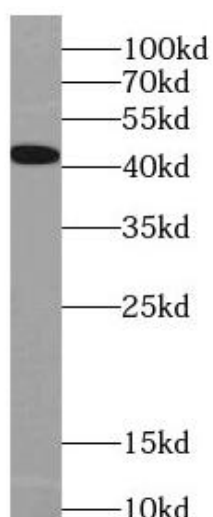
Reactivity:	Human
Tested Application:	ELISA, WB, IHC, IF, FC, IP
Recommended dilution:	WB: 1:5000-1:50000; IP: 1:5000-1:50000 ; IHC: 1:400-1:1600; IF: 1:20-1:200
Image:	



Immunohistochemistry of paraffin-embedded human liver cancer tissue slide using FNab06269(PDHA1 Antibody) at dilution of 1:800



IP Result of anti-PDH E1 α (IP:FNab06269, 3ug; Detection:FNab06269 1:10000) with HEK-293 cells lysate 1800ug.



HEK-293 cells were subjected to SDS PAGE followed by western blot with FNab06269(PDHA1 antibody) at dilution of 1:20000