

PDE6A antibody

Product Information

Catalog No.:	FNab06257
Size:	100µg
Form:	liquid
Purification:	Immunogen affinity purified
Purity:	≥95% as determined by SDS-PAGE
Host:	Rabbit
Clonality:	polyclonal
Clone ID:	None
IsoType:	IgG
Storage:	PBS with 0.02% sodium azide and 50% glycerol pH 7.3, -20°C for 12 months(Avoid repeated freeze / thaw cycles.)

Background

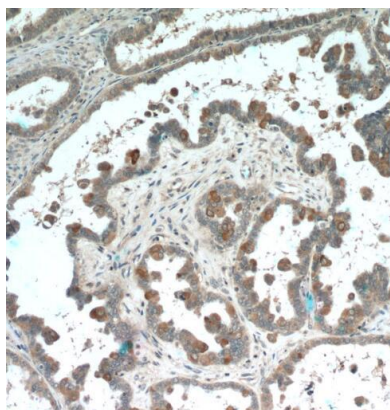
This protein participates in processes of transmission and amplification of the visual signal.

Immunogen information

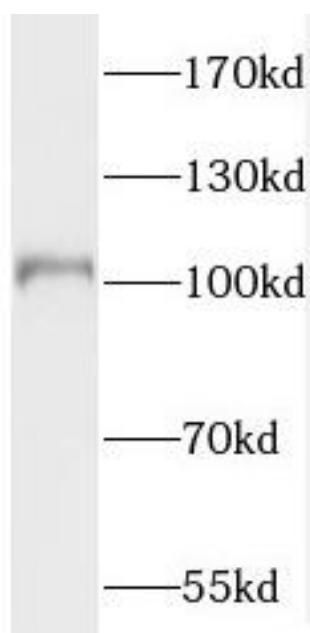
Immunogen:	phosphodiesterase 6A, cGMP-specific, rod, alpha
Synonyms:	Rod cGMP-specific 3',5'-cyclic phosphodiesterase subunit alpha (GMP-PDE alpha) PDE V-B1 PDE6A PDEA
Observed MW:	100-110 kDa
Uniprot ID :	P16499

Application

Reactivity:	Human, Mouse, Rat
Tested Application:	ELISA, WB, IF, IHC
Recommended dilution:	WB: 1:500-1:2000; IHC: 1:20-1:200; IF: 1:20-1:200
Image:	



Immunohistochemistry of paraffin-embedded human ovary tumor tissue slide using FNab06257(PDE6A Antibody) at dilution of 1:50



human brain tissue were subjected to SDS PAGE followed by western blot with FNab06257(PDE6A antibody) at dilution of 1:500