

## PDE2A antibody

### Product Information

Catalog No.:	FNab06251
Size:	100µg
Form:	liquid
Purification:	Immunogen affinity purified
Purity:	≥95% as determined by SDS-PAGE
Host:	Rabbit
Clonality:	polyclonal
Clone ID:	None
IsoType:	IgG
Storage:	PBS with 0.02% sodium azide and 50% glycerol pH 7.3, -20°C for 12 months(Avoid repeated freeze / thaw cycles.)

### Background

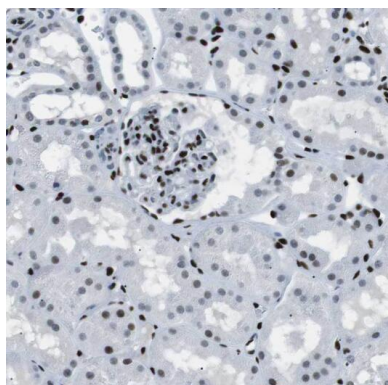
Cyclic nucleotide phosphodiesterase with a dual-specificity for the second messengers cAMP and cGMP, which are key regulators of many important physiological processes. Isoform PDE2A2: Regulates Mitochondrial cAMP Levels and Respiration.

### Immunogen information

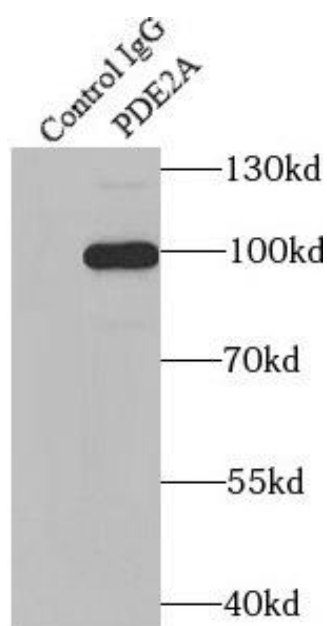
Immunogen:	phosphodiesterase 2A, cGMP-stimulated
Synonyms:	cGMP-dependent 3',5'-cyclic phosphodiesterase Cyclic GMP-stimulated phosphodiesterase (CGS-PDE, cGSPDE) PDE2A
Observed MW:	100-106 kDa
Uniprot ID :	O00408

### Application

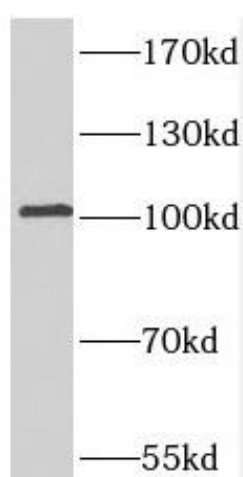
Reactivity:	Human, Mouse, Rat
Tested Application:	ELISA, WB, IHC, IP
Recommended dilution:	WB: 1:500-1:2000; IP: 1:200-1:1000; IHC: 1:20-1:200
Image:	



Immunohistochemistry of paraffin-embedded human kidney using FNab06251(PDE2A antibody) at dilution of 1:50



IP Result of anti-PDE2A (IP:FNab06251, 4ug; Detection:FNab06251 1:500) with mouse brain tissue lysate 3440ug.



mouse brain tissue were subjected to SDS PAGE followed by western blot with FNab06251(PDE2A antibody) at dilution of 1:1000