

PDE1C antibody

Product Information

Catalog No.:	FNab06250
Size:	100µg
Form:	liquid
Purification:	Immunogen affinity purified
Purity:	≥95% as determined by SDS-PAGE
Host:	Rabbit
Clonality:	polyclonal
Clone ID:	None
IsoType:	IgG
Storage:	PBS with 0.02% sodium azide and 50% glycerol pH 7.3, -20°C for 12 months(Avoid repeated freeze / thaw cycles.)

Background

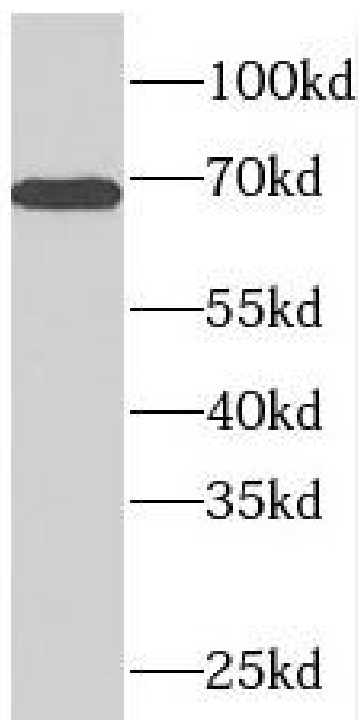
Cyclic nucleotide phosphodiesterase with a dual-specificity for the second messengers cAMP and cGMP, which are key regulators of many important physiological processes. Has a high affinity for both cAMP and cGMP.

Immunogen information

Immunogen:	phosphodiesterase 1C, calmodulin-dependent 70kDa
Synonyms:	Dual specificity calcium/calmodulin-dependent 3',5'-cyclic nucleotide phosphodiesterase 1C (Cam-PDE 1C) Hcam3 PDE1C
Observed MW:	68 kDa
Uniprot ID :	Q14123

Application

Reactivity:	Human, Mouse, Rat
Tested Application:	ELISA, WB
Recommended dilution:WB:	1:500-1:2000
Image:	



human heart tissue were subjected to SDS PAGE followed by western blot with FNab06250(PDE1C antibody) at dilution of 1:500