

## PDE1A antibody

### Product Information

|               |  |
|---------------|--|
| Catalog No.:  | FNab06249  |
| Size:         | 100µg  |
| Form:         | liquid   |
| Purification: | Immunogen affinity purified  |
| Purity:       | ≥95% as determined by SDS-PAGE   |
| Host:         | Rabbit   |
| Clonality:    | polyclonal   |
| Clone ID:     | None   |
| IsoType:      | IgG  |
| Storage:      | PBS with 0.02% sodium azide and 50% glycerol pH 7.3, -20°C for 12 months(Avoid repeated freeze / thaw cycles.) |

### Background

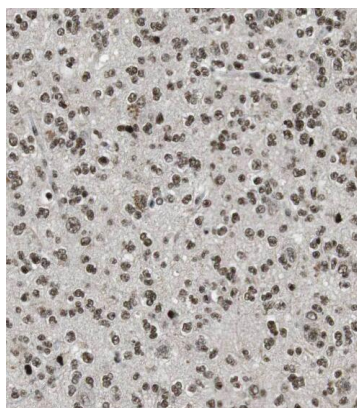
Cyclic nucleotide phosphodiesterase with a dual-specificity for the second messengers cAMP and cGMP, which are key regulators of many important physiological processes. Has a higher affinity for cGMP than for cAMP.

### Immunogen information

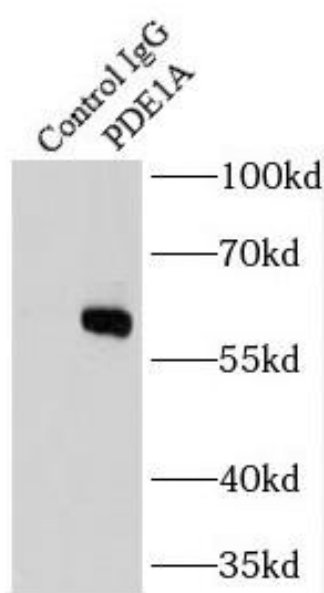
|              |   |
|--------------|---|
| Immunogen:   | phosphodiesterase 1A, calmodulin-dependent  |
| Synonyms:    | Dual specificity calcium/calmodulin-dependent 3',5'-cyclic nucleotide phosphodiesterase 1A (Cam-PDE 1A) 61 kDa Cam-PDE hCam-1 PDE1A |
| Observed MW: | 61 kDa  |
| Uniprot ID : | P54750  |

### Application

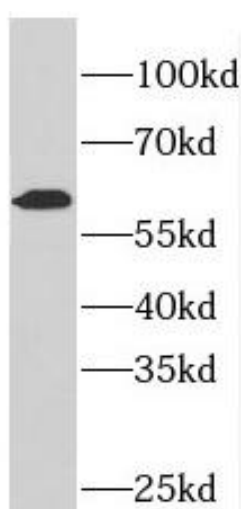
|                       |   |
|-----------------------|---|
| Reactivity:           | Human, Mouse  |
| Tested Application:   | ELISA, WB, IHC, IP                                  |
| Recommended dilution: | WB: 1:500-1:2000; IP: 1:200-1:1000; IHC: 1:20-1:200 |
| Image:                |   |



Immunohistochemistry of paraffin-embedded human gliomas using FNab06249(PDE1A antibody) at dilution of 1:50



IP Result of anti-PDE1A (IP:FNab06249, 4ug; Detection:FNab06249 1:500) with mouse brain tissue lysate 4000ug.



human brain tissue were subjected to SDS PAGE followed by western blot with FNab06249(PDE1A antibody) at dilution of 1:500