

PCM1 antibody

Product Information

Catalog No.:	FNab06212
Size:	100µg
Form:	liquid
Purification:	Immunogen affinity purified
Purity:	≥95% as determined by SDS-PAGE
Host:	Rabbit
Clonality:	polyclonal
Clone ID:	None
IsoType:	IgG
Storage:	PBS with 0.02% sodium azide and 50% glycerol pH 7.3, -20°C for 12 months (Avoid repeated freeze / thaw cycles.)

Background

The protein encoded by this gene is a component of centriolar satellites, which are electron dense granules scattered around centrosomes. Inhibition studies show that this protein is essential for the correct localization of several centrosomal proteins, and for anchoring microtubules to the centrosome. Chromosomal aberrations involving this gene are associated with papillary thyroid carcinomas and a variety of hematological malignancies, including atypical chronic myeloid leukemia and T-cell lymphoma. Multiple transcript variants encoding different isoforms have been found for this gene.

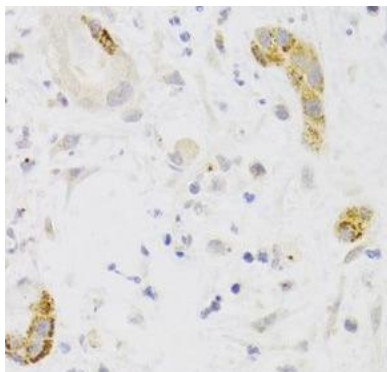
Immunogen information

Immunogen:	pericentriolar material 1
Synonyms:	Pericentriolar material 1 protein (PCM-1, hPCM-1) PCM1
Observed MW:	300 kDa
Uniprot ID :	Q15154

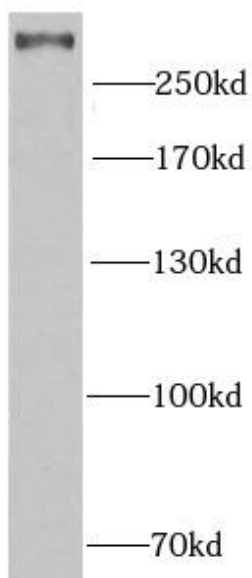
Application

Reactivity:	Human, Mouse
Tested Application:	ELISA, WB, IHC
Recommended dilution:	WB: 1:500 - 1:2000; IHC: 1:50 - 1:200

Image:



Immunohistochemistry of paraffin-embedded human liver cancer using FNab06212(PCM1 Antibody) at dilution of 1:100



HeLa cells were subjected to SDS PAGE followed by western blot with FNab06212(PCM1 antibody) at dilution of 1:1000