

PARVA antibody

Product Information

Catalog No.:	FNab06161
Size:	100µg
Form:	liquid
Purification:	Immunogen affinity purified
Purity:	≥95% as determined by SDS-PAGE
Host:	Rabbit
Clonality:	polyclonal
Clone ID:	None
IsoType:	IgG
Storage:	PBS with 0.02% sodium azide and 50% glycerol pH 7.3, -20°C for 12 months(Avoid repeated freeze / thaw cycles.)

Background

Plays a role in sarcomere organization and in smooth muscle cell contraction. Required for normal development of the embryonic cardiovascular system, and for normal septation of the heart outflow tract. Plays a role in sprouting angiogenesis and is required for normal adhesion of vascular smooth muscle cells to endothelial cells during blood vessel development(By similarity). Plays a role in the reorganization of the actin cytoskeleton, formation of lamellipodia and ciliogenesis. Plays a role in the establishment of cell polarity, cell adhesion, cell spreading, and directed cell migration.

Immunogen information

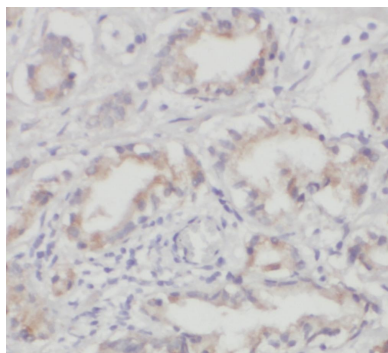
Immunogen:	parvin, alpha
Synonyms:	Alpha-parvin Actopaxin CH-ILKBP Calponin-like integrin-linked kinase-binding protein Matrix-remodeling-associated protein 2 PARVA MXRA2
Observed MW:	45-50 kDa
Uniprot ID :	Q9NVD7

Application

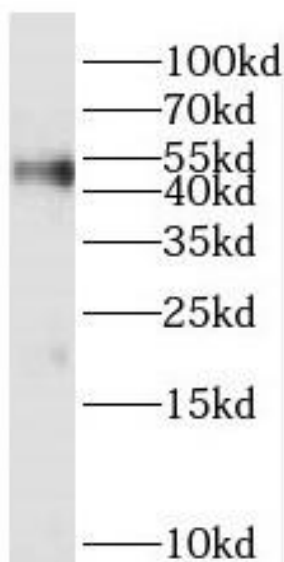
Reactivity:	Human, Mouse, Rat
Tested Application:	ELISA, WB, IHC

Recommended dilution: WB: 1:500-1:2000; IHC: 1:20-1:200

Image:



Immunohistochemistry of paraffin-embedded human prostate cancer using FNab06161(PARVA antibody) at dilution of 1:50



human liver tissue were subjected to SDS PAGE followed by western blot with FNab06161(PARVA antibody) at dilution of 1:500