

## PARP3 antibody

### Product Information

Catalog No.:	FNab06158
Size:	100µg
Form:	liquid
Purification:	Immunogen affinity purified
Purity:	≥95% as determined by SDS-PAGE
Host:	Rabbit
Clonality:	polyclonal
Clone ID:	None
IsoType:	IgG
Storage:	PBS with 0.02% sodium azide and 50% glycerol pH 7.3, -20°C for 12 months(Avoid repeated freeze / thaw cycles.)

### Background

Involved in the base excision repair(BER) pathway, by catalyzing the poly(ADP-ribosyl)ation of a limited number of acceptor proteins involved in chromatin architecture and in DNA metabolism. This modification follows DNA damages and appears as an obligatory step in a detection/signaling pathway leading to the reparation of DNA strand breaks. May link the DNA damage surveillance network to the mitotic fidelity checkpoint. Negatively influences the G1/S cell cycle progression without interfering with centrosome duplication. Binds DNA. May be involved in the regulation of PRC2 and PRC3 complex-dependent gene silencing.

### Immunogen information

Immunogen:	poly(ADP-ribose) polymerase family, member 3
Synonyms:	Protein mono-ADP-ribosyltransferase PARP3 ADP-ribosyltransferase diphtheria toxin-like 3 (ARTD3) DNA ADP-ribosyltransferase PARP3 IRT1 NAD(+) ADP-ribosyltransferase 3 (ADPRT-3) Poly [ADP-ribose] polymerase 3 (PARP-3, hPARP-3) Poly[ADP-ribose] synthase 3 (pADPRT-3) PARP3 ADPRT3 ADPRTL3
Observed MW:	60-62 kDa
Uniprot ID :	Q9Y6F1

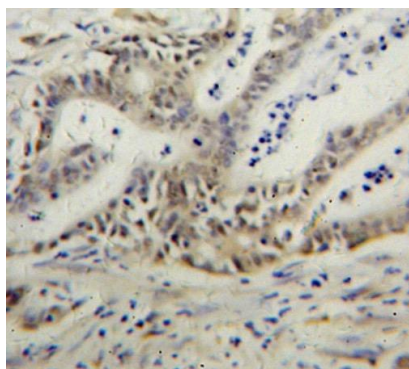
### Application

Reactivity:	Human, Mouse, Rat
-------------	-------------------

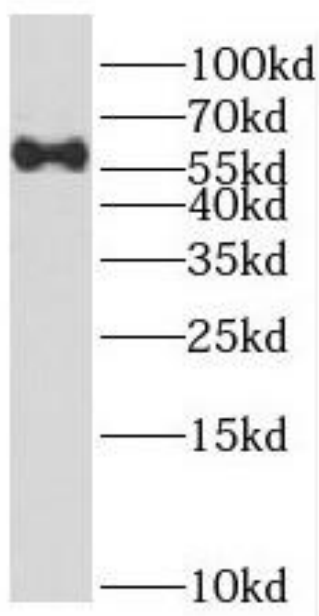
Tested Application: ELISA, WB, IHC, IF

Recommended dilution: WB: 1:500-1:2000; IHC: 1:20-1:200; IF: 1:20-1:200

Image:



Immunohistochemistry of paraffin-embedded human pancreas cancer using FNab06158(PARP3 antibody) at dilution of 1:50



human kidney tissue were subjected to SDS PAGE followed by western blot with FNab06158(PARP3 antibody) at dilution of 1:500