

PARP1 antibody

Product Information

Catalog No.:	FNab06152
Size:	100µg
Form:	liquid
Purification:	Immunogen affinity purified
Purity:	≥95% as determined by SDS-PAGE
Host:	Rabbit
Clonality:	polyclonal
Clone ID:	None
IsoType:	IgG
Storage:	PBS with 0.02% sodium azide and 50% glycerol pH 7.3, -20°C for 12 months(Avoid repeated freeze / thaw cycles.)

Background

PARP1 (poly(ADP-ribose) polymerase 1) is a nuclear enzyme catalyzing the poly(ADP-ribosyl)ation of many key proteins in vivo. The normal function of PARP1 is the routine repair of DNA damage. Activated by DNA strand breaks, the PARP1 is cleaved into an 85 to 89-kDa COOH-terminal fragment and a 24-kDa NH2-terminal peptide by caspases during the apoptotic process. The appearance of PARP fragments is commonly considered as an important biomarker of apoptosis. In addition to caspases, other proteases like calpains, cathepsins, granzymes and matrix metalloproteinases (MMPs) have also been reported to cleave PARP1 and gave rise to fragments ranging from 42-89kD. This antibody was generated against the C-terminal region of human PARP1 and it recognizes the full-length as well as the cleavage of the PARP1.

Immunogen information

Immunogen:	poly(ADP-ribose) polymerase 1
Synonyms:	Poly [ADP-ribose] polymerase 1 (PARP-1) ADP-ribosyltransferase diphtheria toxin-like 1 (ARTD1) DNA ADP-ribosyltransferase PARP1 NAD(+) ADP-ribosyltransferase 1 (ADPRT 1) Poly[ADP-ribose] synthase 1 Protein poly-ADP-ribosyltransferase PARP1 Poly [ADP-ribose] polymerase 1, processed C-terminus Alternative names: Poly [ADP-ribose] polymerase 1, 89-kDa form Poly [ADP-ribose] polymerase 1, processed N-terminus (NT-PARP-1) Alternative names: Poly [ADP-ribose] polymerase 1, 24-kDa form Poly [ADP-ribose] polymerase 1, 28-kDa form PARP1 ADPRT PPOL

Observed MW: 115 kDa, 90 kDa

Uniprot ID : P09874

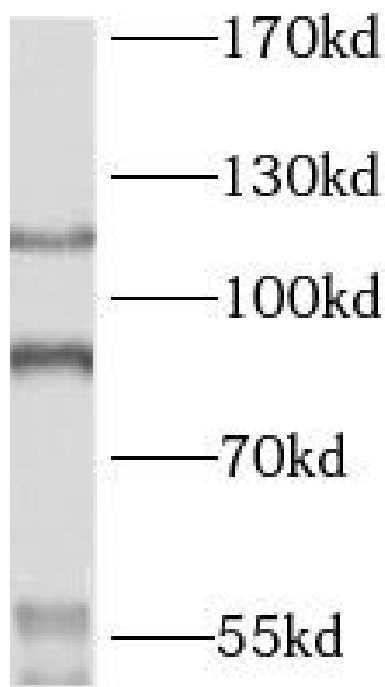
Application

Reactivity: Human, Mouse

Tested Application: ELISA, WB

Recommended dilution: WB: 1:500 - 1:2000

Image:



Jurkat cells were subjected to SDS PAGE followed by western blot with FNab06152(PARP1 Antibody) at dilution of 1:1000