

PARP1 antibody

Product Information

Catalog No.:	FNab06151
Size:	100µg
Form:	liquid
Purification:	Immunogen affinity purified
Purity:	≥95% as determined by SDS-PAGE
Host:	Rabbit
Clonality:	polyclonal
Clone ID:	None
IsoType:	IgG
Storage:	PBS with 0.02% sodium azide and 50% glycerol pH 7.3, -20°C for 12 months (Avoid repeated freeze / thaw cycles.)

Background

This gene encodes a chromatin-associated enzyme, poly(ADP-ribose)transferase, which modifies various nuclear proteins by poly(ADP-ribose)ation. The modification is dependent on DNA and is involved in the regulation of various important cellular processes such as differentiation, proliferation, and tumor transformation and also in the regulation of the molecular events involved in the recovery of cell from DNA damage. In addition, this enzyme may be the site of mutation in Fanconi anemia, and may participate in the pathophysiology of type I diabetes.

Immunogen information

Immunogen:	poly (ADP-ribose) polymerase 1
Synonyms:	Poly [ADP-ribose] polymerase 1 (PARP-1) ADP-ribosyltransferase diphtheria toxin-like 1 (ARTD1) DNA ADP-ribosyltransferase PARP1 NAD(+) ADP-ribosyltransferase 1 (ADPRT 1) Poly[ADP-ribose] synthase 1 Protein poly-ADP-ribosyltransferase PARP1 Poly [ADP-ribose] polymerase 1, processed C-terminus Alternative names: Poly [ADP-ribose] polymerase 1, 89-kDa form Poly [ADP-ribose] polymerase 1, processed N-terminus (NT-PARP-1) Alternative names: Poly [ADP-ribose] polymerase 1, 24-kDa form Poly [ADP-ribose] polymerase 1, 28-kDa form PARP1 ADPRT PPOL
Observed MW:	115 kDa
Uniprot ID :	P09874

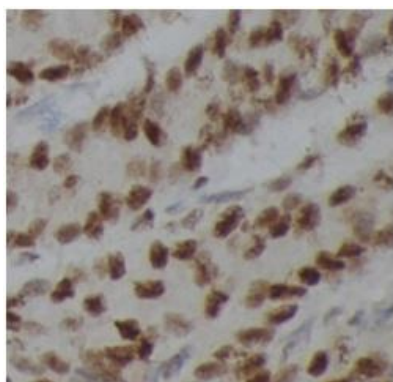
Application

Reactivity: Human, Mouse, Rat

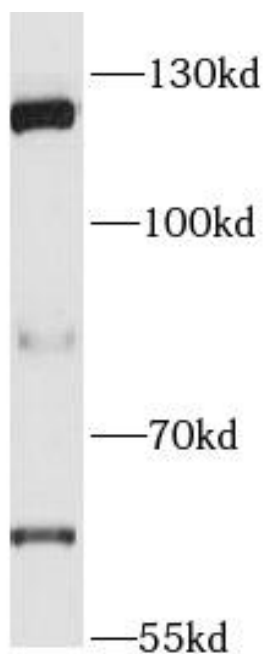
Tested Application: ELISA, WB, IHC, IF

Recommended dilution: WB: 1:500 - 1:2000; IHC: 1:50 - 1:200; IF: 1:50 - 1:200

Image:



Immunohistochemistry of paraffin-embedded human breast cancer using FNab06151(PARP1 antibody) at dilution of 1:100



HeLa cells were subjected to SDS PAGE followed by western blot with FNab06151(PARP1 Antibody) at dilution of 1:1000