

F2RL1 antibody

Product Information

Catalog No.:	FNab06145
Size:	100µg
Form:	liquid
Purification:	Immunogen affinity purified
Purity:	≥95% as determined by SDS-PAGE
Host:	Rabbit
Clonality:	polyclonal
Clone ID:	None
IsoType:	IgG
Storage:	PBS with 0.02% sodium azide and 50% glycerol pH 7.3, -20°C for 12 months(Avoid repeated freeze / thaw cycles.)

Background

Proteinase-activated receptors(PARs) are G protein-coupled receptors activated through cleavage of their N-termini by mainly serine proteases. The family of PARs include four members: PAR1, PAR2, PAR3 and PAR4. PAR2, also known as F2RL1, is expressed in epithelial cells(e.g., lung, gastrointestinal tract), endothelial cells, smooth muscle cells, fibroblasts, nerves, and some immune and inflammatory cells. PAR2 knockout mice and PAR2 agonists and antagonists have implicated PAR2 as a promising target in inflammatory conditions; respiratory, gastrointestinal, metabolic, cardiovascular, and neurological dysfunction; and cancers.(PMID:23895492)

Immunogen information

Immunogen:	coagulation factor II(thrombin) receptor-like 1
Synonyms:	Proteinase-activated receptor 2 (PAR-2) Coagulation factor II receptor-like 1 G-protein coupled receptor 11 Thrombin receptor-like 1 Proteinase-activated receptor 2, alternate cleaved 1 Proteinase-activated receptor 2, alternate cleaved 2 F2RL1 GPR11 PAR2
Observed MW:	50 kDa
Uniprot ID :	P55085

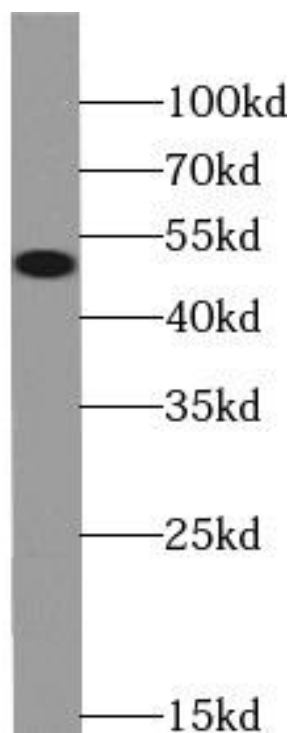
Application

Reactivity:	Human, Mouse, Rat
-------------	-------------------

Tested Application: ELISA, WB

Recommended dilution: WB: 1:200-1:2000

Image:



COLO 320 cells were subjected to SDS PAGE followed by western blot with FNab06145(F2RL1 Antibody) at dilution of 1:600