

PAPSS2 antibody

Product Information

Catalog No.:	FNab06143
Size:	100µg
Form:	liquid
Purification:	Immunogen affinity purified
Purity:	≥95% as determined by SDS-PAGE
Host:	Rabbit
Clonality:	polyclonal
Clone ID:	None
IsoType:	IgG
Storage:	PBS with 0.02% sodium azide and 50% glycerol pH 7.3, -20°C for 12 months(Avoid repeated freeze / thaw cycles.)

Background

Bifunctional enzyme with both ATP sulfurylase and APS kinase activity, which mediates two steps in the sulfate activation pathway. The first step is the transfer of a sulfate group to ATP to yield adenosine 5'-phosphosulfate(APS), and the second step is the transfer of a phosphate group from ATP to APS yielding 3'-phosphoadenylylsulfate(PAPS: activated sulfate donor used by sulfotransferase). In mammals, PAPS is the sole source of sulfate; APS appears to be only an intermediate in the sulfate-activation pathway. May have a important role in skeletogenesis during postnatal growth(By similarity).

Immunogen information

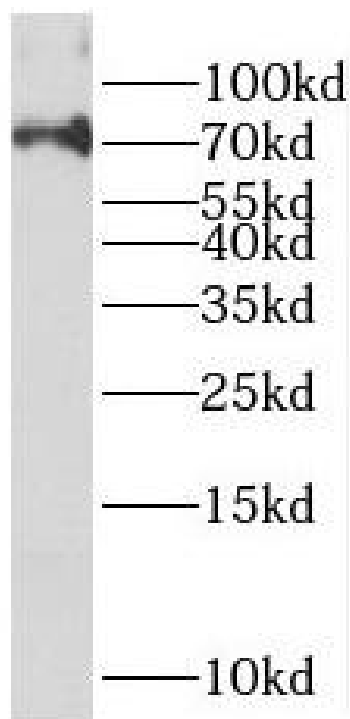
Immunogen:	3'-phosphoadenosine 5'-phosphosulfate synthase 2
Synonyms:	Bifunctional 3'-phosphoadenosine 5'-phosphosulfate synthase 2 (PAPS synthase 2, PAPSS 2) Sulfurylase kinase 2 (SK 2, SK2) PAPSS2 ATPSK2
Observed MW:	70 kDa
Uniprot ID :	O95340

Application

Reactivity:	Human, Mouse, Rat
Tested Application:	ELISA, WB

Recommended dilution: WB: 1:500-1:2000

Image:



HepG2 cells were subjected to SDS PAGE followed by western blot with FNab06143(PAPSS2 antibody) at dilution of 1:300