

## OXA1L antibody

### Product Information

Catalog No.:	FNab06048
Size:	100µg
Form:	liquid
Purification:	Immunogen affinity purified
Purity:	≥95% as determined by SDS-PAGE
Host:	Rabbit
Clonality:	polyclonal
Clone ID:	None
IsoType:	IgG
Storage:	PBS with 0.02% sodium azide and 50% glycerol pH 7.3, -20°C for 12 months (Avoid repeated freeze / thaw cycles.)

### Background

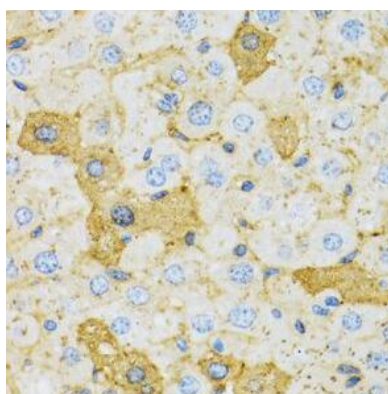
This gene encodes an evolutionarily conserved protein that is localized to the inner mitochondrial membrane. The encoded protein is essential for the translocation of the N-terminal tail of subunit 2 of cytochrome c oxidase, and is involved in the assembly of the cytochrome c oxidase and ATPase complexes of the mitochondrial respiratory chain.

### Immunogen information

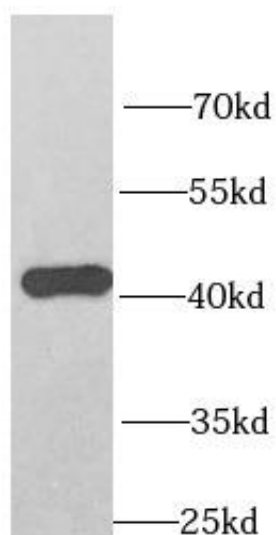
Immunogen:	oxidase (cytochrome c) assembly 1-like
Synonyms:	Mitochondrial inner membrane protein OXA1L Hsa OXA1Hs Oxidase assembly 1-like protein (OXA1-like protein) OXA1L
Observed MW:	42 kDa
Uniprot ID :	Q15070

### Application

Reactivity:	Human, Mouse, Rat
Tested Application:	ELISA, WB, IHC
Recommended dilution:	WB: 1:500 - 1:2000; IHC: 1:50 - 1:100
Image:	



Immunohistochemistry of paraffin-embedded rat liver using FNab06048( OXA1L Antibody) at dilution of 1:100



HeLa cells were subjected to SDS PAGE followed by western blot with FNab06048( OXA1L Antibody) at dilution of 1:1000