

ODAM antibody

Product Information

Catalog No.:	FNab05967
Size:	100µg
Form:	liquid
Purification:	Immunogen affinity purified
Purity:	≥95% as determined by SDS-PAGE
Host:	Rabbit
Clonality:	polyclonal
Clone ID:	None
IsoType:	IgG
Storage:	PBS with 0.02% sodium azide and 50% glycerol pH 7.3, -20°C for 12 months(Avoid repeated freeze / thaw cycles.)

Background

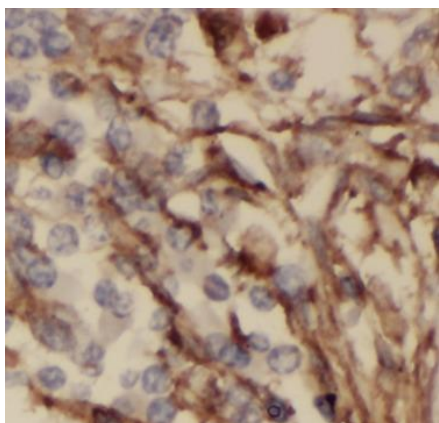
Tooth-associated epithelia protein that probably plays a role in odontogenesis, the complex process that results in the initiation and generation of the tooth. May be incorporated in the enamel matrix at the end of mineralization process. Involved in the induction of RHOA activity via interaction with ARHGEF and expression of downstream factors such as ROCK. Plays a role in attachment of the junctional epithelium to the tooth surface.

Immunogen information

Immunogen:	odontogenic, ameloblast associated
Synonyms:	Odontogenic ameloblast-associated protein Apin ODAM APIN
Observed MW:	None
Uniprot ID :	A1E959

Application

Reactivity:	Human
Tested Application:	ELISA, IHC
Recommended dilution:	IHC: 1:20-1:200
Image:	



Immunohistochemistry of paraffin-embedded human lung cancer tissue slide using FNab05967(ODAM Antibody) at dilution of 1:50