

## CTAG1A antibody

### Product Information

Catalog No.:	FNab05948
Size:	100µg
Form:	liquid
Purification:	Immunogen affinity purified
Purity:	≥95% as determined by SDS-PAGE
Host:	Rabbit
Clonality:	polyclonal
Clone ID:	None
IsoType:	IgG
Storage:	PBS with 0.02% sodium azide and 50% glycerol pH 7.3, -20°C for 12 months(Avoid repeated freeze / thaw cycles.)

### Background

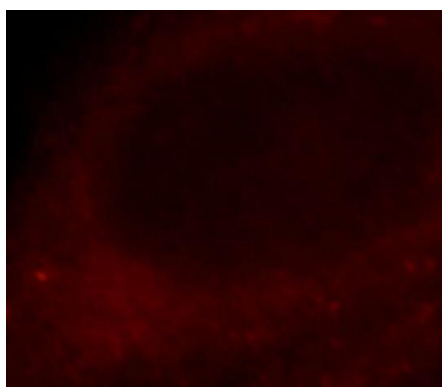
CTAG1A, also named as NY-ESO-1, CTAG, CTAG1, ESO1, LAGE2, LAGE2A, CTAG1B, LAGE2B and CT6.1, belongs to the CTAG family.

### Immunogen information

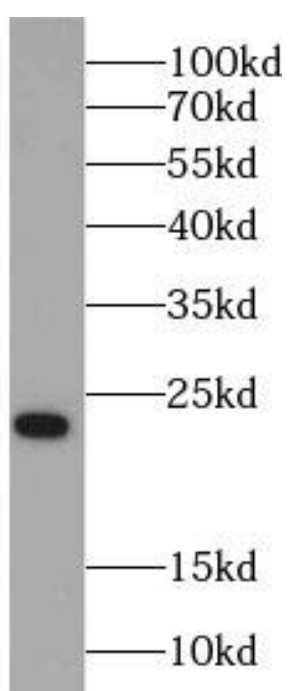
Immunogen:	cancer/testis antigen 1A
Synonyms:	Cancer/testis antigen 1 Autoimmunogenic cancer/testis antigen NY-ESO-1 Cancer/testis antigen 6.1 (CT6.1) L antigen family member 2 (LAGE-2) CTAG1A CTAG CTAG1 ESO1 LAGE2 LAGE2A
Observed MW:	23 kDa
Uniprot ID :	P78358

### Application

Reactivity:	Human
Tested Application:	ELISA, WB, IF
Recommended dilution:	WB: 1:200-1:1000; IP: 1:200-1:2000; IF: 1:10-1:100
Image:	



Immunofluorescent analysis of HepG2 cells, using CTAG1A antibody FNab05948 at 1:30 dilution and Rhodamine-labeled goat anti-rabbit IgG (red).



HepG2 cells were subjected to SDS PAGE followed by western blot with FNab05948(CTAG1A antibody) at dilution of 1:100