

NUF2 antibody

Product Information

Catalog No.:	FNab05909
Size:	100µg
Form:	liquid
Purification:	Immunogen affinity purified
Purity:	≥95% as determined by SDS-PAGE
Host:	Rabbit
Clonality:	polyclonal
Clone ID:	None
IsoType:	IgG
Storage:	PBS with 0.02% sodium azide and 50% glycerol pH 7.3, -20°C for 12 months(Avoid repeated freeze / thaw cycles.)

Background

Acts as a component of the essential kinetochore-associated NDC80 complex, which is required for chromosome segregation and spindle checkpoint activity(PubMed:12438418, PubMed:14654001, PubMed:15062103, PubMed:15235793, PubMed:15239953, PubMed:15548592, PubMed:17535814). Required for kinetochore integrity and the organization of stable microtubule binding sites in the outer plate of the kinetochore(PubMed:15548592). The NDC80 complex synergistically enhances the affinity of the SKA1 complex for microtubules and may allow the NDC80 complex to track depolymerizing microtubules(PubMed:23085020).

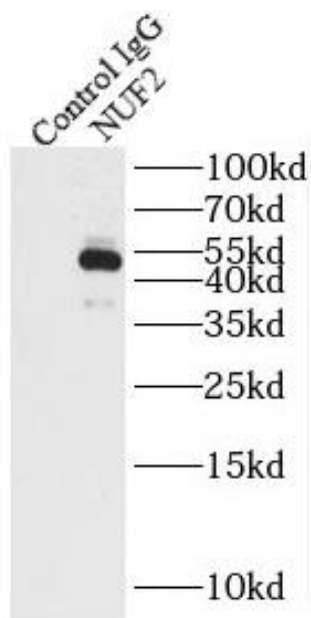
Immunogen information

Immunogen:	NUF2, NDC80 kinetochore complex component, homolog
Synonyms:	Kinetochore protein Nuf2 (hNuf2, hNuf2R, hsNuf2) Cell division cycle-associated protein 1 NUF2 CDCA1 NUF2R
Observed MW:	50 kDa
Uniprot ID :	Q9BZD4

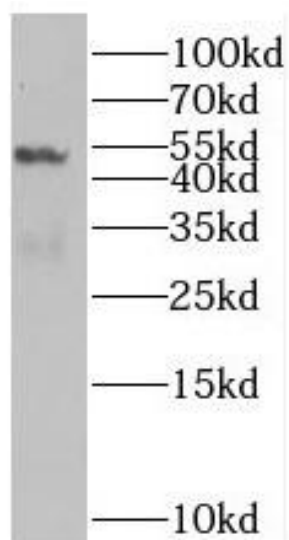
Application

Reactivity:	Human, Mouse, Rat
Tested Application:	ELISA, WB, IP
Recommended dilution:	WB: 1:500-1:2000; IP: 1:200-1:2000

Image:



IP Result of anti-NUF2 (IP:FNab05909, 3ug;
Detection:FNab05909 1:500) with HEK-293 cells
lysate 1760ug.



HEK-293 cells were subjected to SDS PAGE
followed by western blot with FNab05909(NUF2
antibody) at dilution of 1:500