

## NUTF2 antibody

### Product Information

Catalog No.:	FNab05881
Size:	100µg
Form:	liquid
Purification:	Protein A+G purification
Purity:	≥95% as determined by SDS-PAGE
Host:	Mouse
Clonality:	monoclonal
Clone ID:	5C7
IsoType:	IgG2a
Storage:	PBS with 0.02% sodium azide and 50% glycerol pH 7.3, -20°C for 12 months(Avoid repeated freeze / thaw cycles.)

### Background

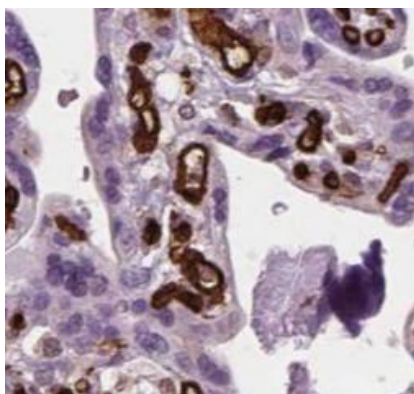
None

### Immunogen information

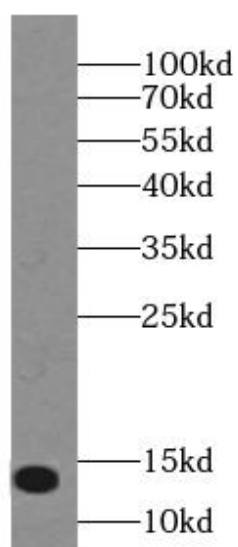
Immunogen:	nuclear transport factor 2
Synonyms:	Nuclear transport factor 2 (NTF-2) Placental protein 15 (PP15) NUTF2 NTF2
Observed MW:	14 kDa
Uniprot ID :	P61970

### Application

Reactivity:	Human
Tested Application:	ELISA, WB, IF, IHC
Recommended dilution:	WB: 1:500-1:2000; IHC: 1:250-1:1000; IF: 1:50-1:500
Image:	



Immunohistochemistry of paraffin-embedded human placenta tissue slide using FNab05881(NUTF2 antibody) at dilution of 1:100



HeLa cells were subjected to SDS PAGE followed by western blot with FNab05881(NUTF2 antibody) at dilution of 1:1000