

NUTF2 antibody

Product Information

Catalog No.:	FNab05880
Size:	100µg
Form:	liquid
Purification:	Immunogen affinity purified
Purity:	≥95% as determined by SDS-PAGE
Host:	Rabbit
Clonality:	polyclonal
Clone ID:	None
IsoType:	IgG
Storage:	PBS with 0.02% sodium azide and 50% glycerol pH 7.3, -20°C for 12 months(Avoid repeated freeze / thaw cycles.)

Background

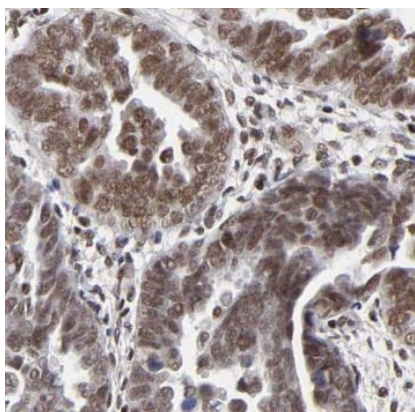
None

Immunogen information

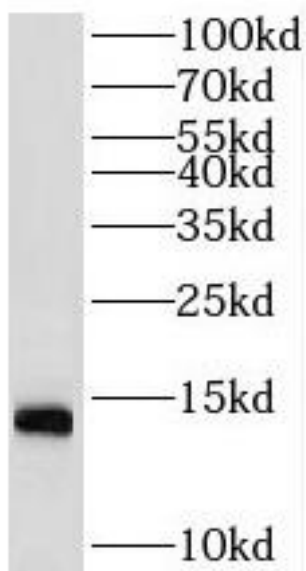
Immunogen:	nuclear transport factor 2
Synonyms:	Nuclear transport factor 2 (NTF-2) Placental protein 15 (PP15) NUTF2 NTF2
Observed MW:	14 kDa
Uniprot ID :	P61970

Application

Reactivity:	Human, Mouse, Rat
Tested Application:	ELISA, WB, IHC, IF
Recommended dilution:	WB: 1:500-1:2000; IHC: 1:20-1:200; IF: 1:20-1:200
Image:	



Immunohistochemistry of paraffin-embedded human ovary tumor using FNab05880(NUTF2 antibody) at dilution of 1:100



K-562 cells were subjected to SDS PAGE followed by western blot with FNab05880(NUTF2 antibody) at dilution of 1:500