

ENO2 antibody

Product Information

Catalog No.:	FNab05865
Size:	100µg
Form:	liquid
Purification:	Immunogen affinity purified
Purity:	≥95% as determined by SDS-PAGE
Host:	Rabbit
Clonality:	polyclonal
Clone ID:	None
IsoType:	IgG
Storage:	PBS with 0.02% sodium azide and 50% glycerol pH 7.3, -20°C for 12 months(Avoid repeated freeze / thaw cycles.)

Background

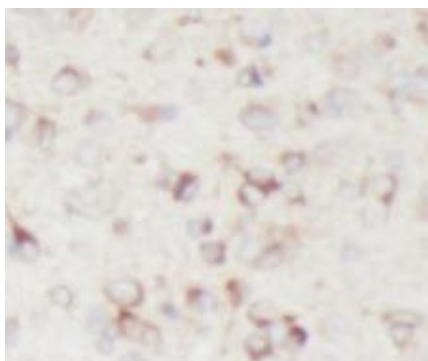
This gene encodes one of the three enolase isoenzymes found in mammals. This isoenzyme, a homodimer, is found in mature neurons and cells of neuronal origin. A switch from alpha enolase to gamma enolase occurs in neural tissue during development in rats and primates.

Immunogen information

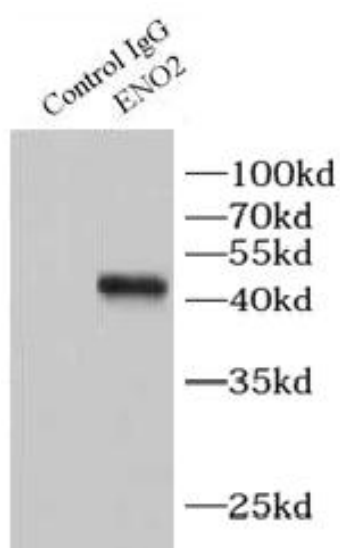
Immunogen:	enolase 2(gamma, neuronal)
Synonyms:	Gamma-enolase 2-phospho-D-glycerate hydro-lyase Enolase 2 Neural enolase Neuron-specific enolase (NSE) ENO2
Observed MW:	47 kDa
Uniprot ID :	P09104

Application

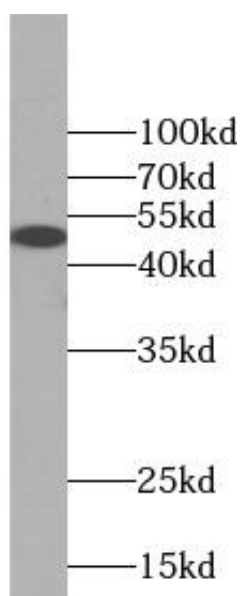
Reactivity:	Human, Mouse, Rat
Tested Application:	ELISA, WB, IHC, IP
Recommended dilution:	WB: 1:200-1:1000; IP: 1:200-1:1000; IHC: 1:100-1:400
Image:	



Immunohistochemistry of paraffin-embedded human brain tissue slide using FNab05865(ENO2 Antibody) at dilution of 1:200



IP Result of anti-NSE (IP: FNab05865, 4ug; Detection: FNab05865 1:300) with mouse brain tissue lysate 4000ug.



human brain tissue were subjected to SDS PAGE followed by western blot with FNab05865(ENO2 antibody) at dilution of 1:500